

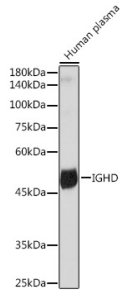
Anti-IgD Antibody [ARC2240] (A305388)

Specifications:

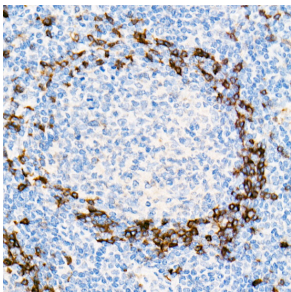
Name:	Anti-IgD Antibody [ARC2240]
Description:	Rabbit monoclonal [ARC2240] antibody to IgD.
Applications:	WB, IHC
Recommended Dilutions:	WB: 1:500-1:2,000, IHC: 1:50-1:200
Reactivity:	Human
Immunogen:	A synthetic peptide corresponding to a sequence within amino acids 1-100 of human IGHD (P01880).
Sequence:	APTKAPDVFPIISGCRHPKDNSPVVLAACLITGYHPTSVTVTWYMGTSQSQPQRTFPEIQ RRDSYYMTSSQLSTPLQQWRQGEYKCVVQHTASKSKKEIFRW
Host:	Rabbit
Clonality:	Monoclonal
Clone ID:	ARC2240
Isotype:	IgG
Conjugate:	Unconjugated
Purification:	Affinity purification.
Molecular Weight:	55 kDa
Product Form:	Liquid
Formulation:	Supplied in Phosphate Buffered Saline, pH 7.3, with 50% Glycerol, 0.05% BSA, and 0.02% Sodium Azide.
Storage:	Shipped at 4°C. Upon delivery aliquot and store at -20°C. Avoid freeze / thaw cycles.
Disclaimer:	This product is for research use only. It is not intended for diagnostic or therapeutic use.

Anti-IgD Antibody [ARC2240] (A305388)

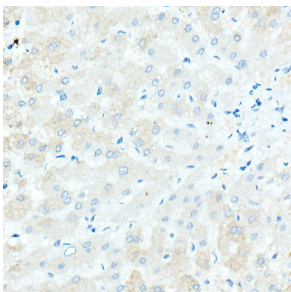
Images:



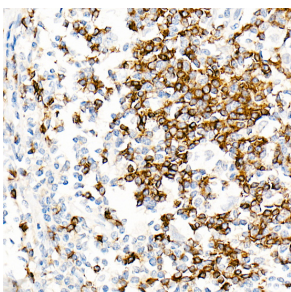
Western blot analysis of extracts of Human plasma, using Anti-IgD Antibody [ARC2240] (A305388) at 1:1,000 dilution. The secondary antibody was Goat Anti-Rabbit IgG H&L Antibody (HRP) at 1:10,000 dilution. Lysates/proteins were present at 25 μ g per lane. The blocking buffer used was 3% non-fat dry milk in TBST. Detection was with a ECL Basic Kit. Exposure time: 90s.



Immunohistochemistry analysis of paraffin-embedded human tonsil using Anti-IgD Antibody [ARC2240] (A305388) at a dilution of 1:100 (40x lens). Perform high pressure antigen retrieval with 10 mM Tris/EDTA buffer pH 9.0 before commencing with IHC staining protocol.



Immunohistochemistry analysis of paraffin-embedded human liver (negative control sample) using Anti-IgD Antibody [ARC2240] (A305388) at a dilution of 1:100 (40x lens). Perform high pressure antigen retrieval with 10 mM Tris/EDTA buffer pH 9.0 before commencing with IHC staining protocol.



Immunohistochemistry analysis of paraffin-embedded human Hodgkin lymphoma using Anti-IgD Antibody [ARC2240] (A305388) at a dilution of 1:100 (40x lens). Perform high pressure antigen retrieval with 10 mM Tris/EDTA buffer pH 9.0 before commencing with IHC staining protocol.