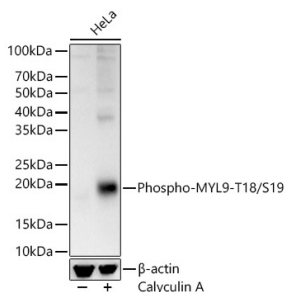


Anti-MYL9 (phospho Thr18 + Ser19) Antibody (A305466)

Specifications:

Name:	Anti-MYL9 (phospho Thr18 + Ser19) Antibody
Description:	Rabbit polyclonal antibody to MYL9 (phospho Thr18 + Ser19).
Applications:	WB, IHC
Recommended Dilutions:	WB: 1:1,000-1:5,000, IHC: 1:50-1:200
Reactivity:	Human, Mouse, Rat
Immunogen:	A synthetic phosphorylated peptide around T18 & S19 of human MYL9 (NP_006088.2).
Sequence:	ATSNV
Host:	Rabbit
Clonality:	Polyclonal
Isotype:	IgG
Conjugate:	Unconjugated
Purification:	Affinity purification.
Molecular Weight:	18 kDa
Product Form:	Liquid
Formulation:	Supplied in Phosphate Buffered Saline, pH 7.3, with 50% Glycerol and 0.01% Thiomersal.
Storage:	Shipped at 4°C. Upon delivery aliquot and store at -20°C. Avoid freeze / thaw cycles.
Disclaimer:	This product is for research use only. It is not intended for diagnostic or therapeutic use.

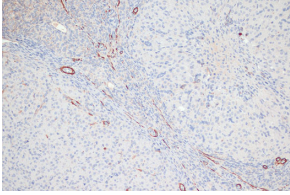
Images:



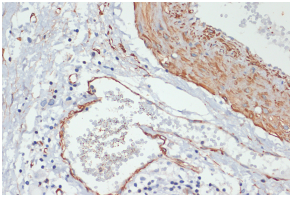
Western blot analysis of HeLa, using Anti-MYL9 (phospho Thr18 + Ser19) Antibody (A305466) at 1:3,000 dilution. The secondary antibody was Goat Anti-Rabbit IgG H&L Antibody (HRP) at 1:10,000 dilution. Lysates/proteins were present at 25µg per lane. The blocking buffer used was 3% non-fat dry milk in TBST. Detection was with a ECL Basic Kit. Exposure time: 10s.

Anti-MYL9 (phospho Thr18 + Ser19) Antibody (A305466)

Images continued:



Immunohistochemistry analysis of paraffin-embedded rat ovary using Anti-MYL9 (phospho Thr18 + Ser19) Antibody (A305466) at a dilution of 1:100 (20x lens). Perform microwave antigen retrieval with 10 mM Tris/EDTA buffer pH 9.0 before commencing with IHC staining protocol.



Immunohistochemistry analysis of paraffin-embedded human gastric cancer using Anti-MYL9 (phospho Thr18 + Ser19) Antibody (A305466) at a dilution of 1:100 (40x lens). Perform microwave antigen retrieval with 10 mM Tris/EDTA buffer pH 9.0 before commencing with IHC staining protocol.