

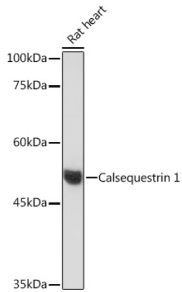
Anti-Calsequestrin 1 Antibody [ARC2209] (A305681)

Specifications:

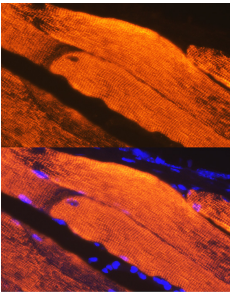
Name:	Anti-Calsequestrin 1 Antibody [ARC2209]
Description:	Rabbit monoclonal [ARC2209] antibody to Calsequestrin 1.
Applications:	WB, ICC/IF
Recommended Dilutions:	WB: 1:500-1:2,000, ICC/IF: 1:50-1:200
Reactivity:	Human, Mouse, Rat
Immunogen:	Recombinant fusion protein containing a sequence corresponding to amino acids 100-200 of human Calsequestrin 1 (P31415).
Sequence:	EDKGVGFGLVDSEKDAAVAKKLGLEVDSMYVFKGDEVIEYDGEFSADTIVEFLLDVL EDPVELIEGERELQAFENIEDEIKLIGYFKSKDSEHYKAFEDA
Host:	Rabbit
Clonality:	Monoclonal
Clone ID:	ARC2209
Isotype:	IgG
Conjugate:	Unconjugated
Purification:	Affinity purification.
Molecular Weight:	55 kDa
Product Form:	Liquid
Formulation:	Supplied in Phosphate Buffered Saline, pH 7.3, with 50% Glycerol, 0.05% BSA, and 0.02% Sodium Azide.
Storage:	Shipped at 4°C. Upon delivery aliquot and store at -20°C. Avoid freeze / thaw cycles.
Disclaimer:	This product is for research use only. It is not intended for diagnostic or therapeutic use.

Anti-Calsequestrin 1 Antibody [ARC2209] (A305681)

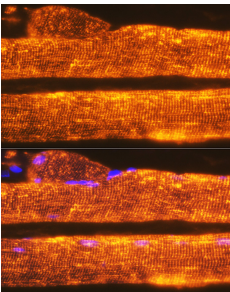
Images:



Western blot analysis of extracts of Rat heart, using Anti-Calsequestrin 1 Antibody [ARC2209] (A305681) at 1:500 dilution. The secondary antibody was Goat Anti-Rabbit IgG H&L Antibody (HRP) at 1:10,000 dilution. Lysates/proteins were present at 25 μ g per lane. The blocking buffer used was 3% non-fat dry milk in TBST. Detection was with a ECL Basic Kit. Exposure time: 60s.



Immunofluorescence analysis of mouse skeletal muscle using Anti-Calsequestrin 1 Antibody [ARC2209] (A305681) at a dilution of 1:100. DAPI was used to stain the cell nuclei (blue).



Immunofluorescence analysis of rat skeletal muscle using Anti-Calsequestrin 1 Antibody [ARC2209] (A305681) at a dilution of 1:100. DAPI was used to stain the cell nuclei (blue).