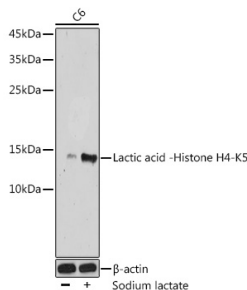


## Anti-Histone H4 (lactyl Lys5) Antibody (A306099)

### Specifications:

Name:	Anti-Histone H4 (lactyl Lys5) Antibody
Description:	Rabbit polyclonal antibody to Histone H4 (lactyl Lys5).
Applications:	WB, Dot Blot
Recommended Dilutions:	DB: 1:500-1:4,000, WB: 1:500-1:2,000
Reactivity:	Human, Mouse, Rat
Immunogen:	A synthetic lactylated peptide around K5 of human Histone H4 (NP_003539.1).
Sequence:	GRGKG
Host:	Rabbit
Clonality:	Polyclonal
Isotype:	IgG
Conjugate:	Unconjugated
Purification:	Affinity purification.
Molecular Weight:	11 kDa
Product Form:	Liquid
Formulation:	Supplied in Phosphate Buffered Saline, pH 7.3, with 50% Glycerol and 0.01% Thiomersal.
Storage:	Shipped at 4°C. Upon delivery aliquot and store at -20°C. Avoid freeze / thaw cycles.
Disclaimer:	This product is for research use only. It is not intended for diagnostic or therapeutic use.

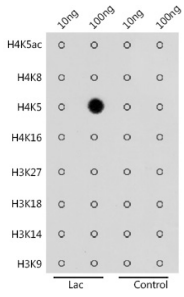
### Images:



Western blot analysis of extracts of C6 cells, using Anti-Histone H4 (lactyl Lys5) Antibody (A306099) at 1:500 dilution. C6 cells were treated by Sodium lactate(100mM) for 24h. The secondary antibody was Goat Anti-Rabbit IgG H&L Antibody (HRP) at 1:10,000 dilution. Lysates/proteins were present at 25µg per lane. The blocking buffer used was 3% BSA. Detection was with a ECL Basic Kit. Exposure time: 3min.

## Anti-Histone H4 (lactyl Lys5) Antibody (A306099)

Images continued:



Dot blot analysis of a mixture of peptides using Anti-Histone H4 (lactyl Lys5) Antibody (A306099) at a 1:4,000 dilution.