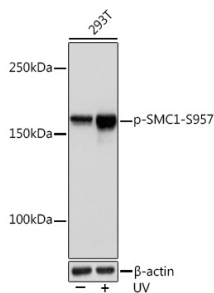


## Anti-SMC1A (phospho Ser957) Antibody [ARC1606] (A306127)

### Specifications:

Name:	Anti-SMC1A (phospho Ser957) Antibody [ARC1606]
Description:	Rabbit monoclonal [ARC1606] antibody to SMC1A (phospho Ser957).
Applications:	WB, IHC
Recommended Dilutions:	WB: 1:500-1:2,000, IHC: 1:50-1:200
Reactivity:	Human, Mouse, Rat
Immunogen:	A synthetic phosphorylated peptide around S957 of human SMC1 (Q14683).
Sequence:	GSSQG
Host:	Rabbit
Clonality:	Monoclonal
Clone ID:	ARC1606
Isotype:	IgG
Conjugate:	Unconjugated
Purification:	Affinity purification.
Molecular Weight:	160 kDa
Product Form:	Liquid
Formulation:	Supplied in Phosphate Buffered Saline, pH 7.3, with 50% Glycerol, 0.05% BSA, and 0.02% Sodium Azide.
Storage:	Shipped at 4°C. Upon delivery aliquot and store at -20°C. Avoid freeze / thaw cycles.
Disclaimer:	This product is for research use only. It is not intended for diagnostic or therapeutic use.

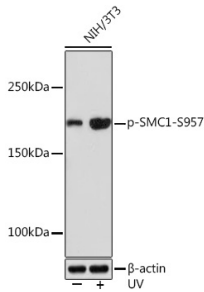
### Images:



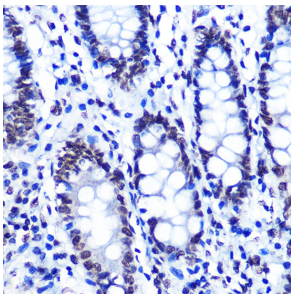
Western blot analysis of extracts of 293T cells, using Anti-SMC1A (phospho Ser957) Antibody [ARC1606] (A306127) at 1:1,000 dilution. 293T cells were treated by UV at room temperature for 15-30 minutes. The secondary antibody was Goat Anti-Rabbit IgG H&L Antibody (HRP) at 1:10,000 dilution. Lysates/proteins were present at 25µg per lane. The blocking buffer used was 3% BSA. Detection was with a ECL Basic Kit. Exposure time: 1s.

## Anti-SMC1A (phospho Ser957) Antibody [ARC1606] (A306127)

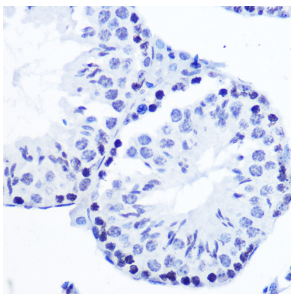
Images continued:



Western blot analysis of extracts of NIH/3T3 cells, using Anti-SMC1A (phospho Ser957) Antibody [ARC1606] (A306127) at 1:1,000 dilution. NIH/3T3 cells were treated by UV at room temperature for 15-30 minutes. The secondary antibody was Goat Anti-Rabbit IgG H&L Antibody (HRP) at 1:10,000 dilution. Lysates/proteins were present at 25 $\mu$ g per lane. The blocking buffer used was 3% BSA. Detection was with a ECL Enhanced Kit (RM00021). Exposure time: 3min.



Immunohistochemistry analysis of paraffin-embedded human colon tissue using Anti-SMC1A (phospho Ser957) Antibody [ARC1606] (A306127) at a dilution of 1:100 (40x lens). Perform microwave antigen retrieval with 10 mM Tris/EDTA buffer pH 9.0 before commencing with IHC staining protocol.



Immunohistochemistry analysis of paraffin-embedded mouse testis using Anti-SMC1A (phospho Ser957) Antibody [ARC1606] (A306127) at a dilution of 1:100 (40x lens). Perform microwave antigen retrieval with 10 mM Tris/EDTA buffer pH 9.0 before commencing with IHC staining protocol.