

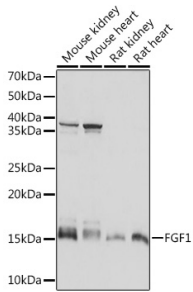
## Anti-FGF1 Antibody [ARC1414] (A306191)

### Specifications:

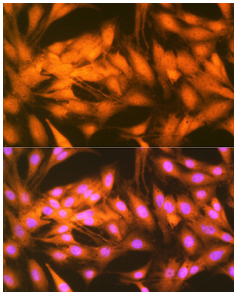
|                        |  |
|------------------------|--|
| Name:                  | Anti-FGF1 Antibody [ARC1414]   |
| Description:           | Rabbit monoclonal [ARC1414] antibody to FGF1.  |
| Applications:          | WB, ICC/IF   |
| Recommended Dilutions: | WB: 1:500-1:2,000, ICC/IF: 1:50-1:200  |
| Reactivity:            | Human, Mouse, Rat  |
| Immunogen:             | A synthetic peptide corresponding to a sequence within amino acids 56-155 of human FGF1 (P05230).          |
| Sequence:              | HIQLQLSAESVGEVYIKSTETGQYLAMDTDGLLYGSQTPNEECLFLERLEENHYNTYI<br>SKKHAEKNWFVGLKKNKNGSCKRGPRTHYGQKAILFLPLPVSSD |
| Host:                  | Rabbit   |
| Clonality:             | Monoclonal   |
| Clone ID:              | ARC1414  |
| Isotype:               | IgG  |
| Conjugate:             | Unconjugated   |
| Purification:          | Affinity purification.   |
| Molecular Weight:      | 17 kDa   |
| Product Form:          | Liquid   |
| Formulation:           | Supplied in Phosphate Buffered Saline, pH 7.3, with 50% Glycerol, 0.05% BSA, and 0.02% Sodium Azide.       |
| Storage:               | Shipped at 4°C. Upon delivery aliquot and store at -20°C. Avoid freeze / thaw cycles.                      |
| Disclaimer:            | This product is for research use only. It is not intended for diagnostic or therapeutic use.               |

## Anti-FGF1 Antibody [ARC1414] (A306191)

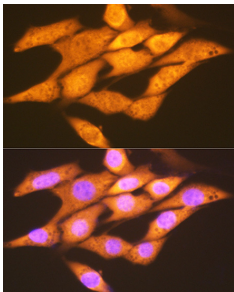
### Images:



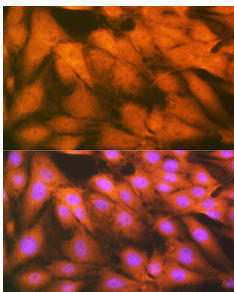
Western blot analysis of extracts of various cell lines, using Anti-FGF1 Antibody [ARC1414] (A306191) at 1:1,000 dilution. The secondary antibody was Goat Anti-Rabbit IgG H&L Antibody (HRP) at 1:10,000 dilution. Lysates/proteins were present at 25µg per lane. The blocking buffer used was 3% non-fat dry milk in TBST. Detection was with a ECL Basic Kit. Exposure time: 10s.



Immunofluorescence analysis of C6 cells using Anti-FGF1 Antibody [ARC1414] (A306191) at a dilution of 1:100 (40x lens). DAPI was used to stain the cell nuclei (blue).



Immunofluorescence analysis of NIH-3T3 cells using Anti-FGF1 Antibody [ARC1414] (A306191) at a dilution of 1:100 (40x lens). DAPI was used to stain the cell nuclei (blue).



Immunofluorescence analysis of U-2 OS cells using Anti-FGF1 Antibody [ARC1414] (A306191) at a dilution of 1:100 (40x lens). DAPI was used to stain the cell nuclei (blue).