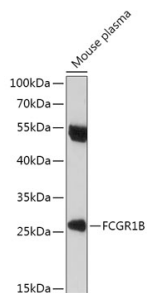


## Anti-CD64 Antibody (A306290)

### Specifications:

Name:	Anti-CD64 Antibody
Description:	Rabbit polyclonal antibody to CD64.
Applications:	WB, IHC
Recommended Dilutions:	WB: 1:500-1:2,000, IHC: 1:50-1:200
Reactivity:	Human, Mouse
Immunogen:	A synthetic peptide corresponding to a sequence within amino acids 100-200 of human FCGR1B (NP_001017986.1).
Sequence:	IHRGWLLLQVSSRVFMEGEPLALRCHAWKDKLVYNVLYYRNGKAFKFFHWNSNLTKL TNISHNGTYHCSGMGKHRYTSAGISQYTVKGLQLPTPVWFHVL
Host:	Rabbit
Clonality:	Polyclonal
Isotype:	IgG
Conjugate:	Unconjugated
Purification:	Affinity purification.
Molecular Weight:	27 kDa
Product Form:	Liquid
Formulation:	Supplied in Phosphate Buffered Saline, pH 7.3, with 50% Glycerol and 0.01% Thiomersal.
Storage:	Shipped at 4°C. Upon delivery aliquot and store at -20°C. Avoid freeze / thaw cycles.
Disclaimer:	This product is for research use only. It is not intended for diagnostic or therapeutic use.

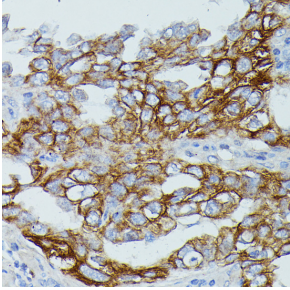
### Images:



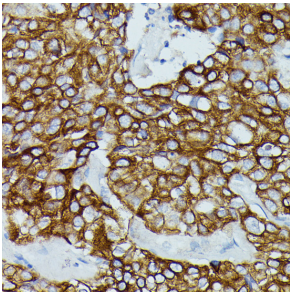
Western blot analysis of extracts of Mouse plasma, using Anti-CD64 Antibody (A306290) at 1:1,000 dilution. The secondary antibody was Goat Anti-Rabbit IgG H&L Antibody (HRP) at 1:10,000 dilution. Lysates/proteins were present at 25µg per lane. The blocking buffer used was 3% non-fat dry milk in TBST. Detection was with a ECL Basic Kit. Exposure time: 180s.

## Anti-CD64 Antibody (A306290)

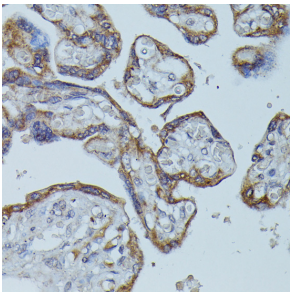
Images continued:



Immunohistochemistry analysis of paraffin-embedded human lung cancer using Anti-CD64 Antibody (A306290) at a dilution of 1:100 (40x lens).



Immunohistochemistry analysis of paraffin-embedded human mammary cancer using Anti-CD64 Antibody (A306290) at a dilution of 1:100 (40x lens).



Immunohistochemistry analysis of paraffin-embedded human placenta using Anti-CD64 Antibody (A306290) at a dilution of 1:100 (40x lens).