

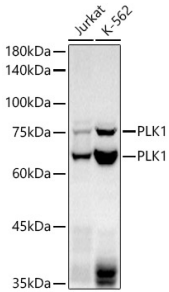
Anti-PLK1 Antibody [ARC52313] (A306405)

Specifications:

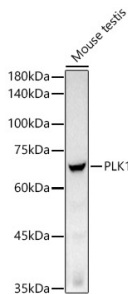
Name:	Anti-PLK1 Antibody [ARC52313]
Description:	Rabbit monoclonal [ARC52313] antibody to PLK1.
Applications:	WB, IHC
Recommended Dilutions:	WB: 1:500-1:1,000, IHC: 1:50-1:200
Reactivity:	Human, Mouse, Rat, Monkey
Immunogen:	Recombinant fusion protein containing a sequence corresponding to amino acids 272-495 of human PLK1 (NP_005021.2).
Sequence:	KHINPVAASLIQKMLQTDPTARPTINELLNDEFFFTSGYIPARLPITCLTIPPRFSIAP SSLDPSNRKPLTVLNKGLNPLPERPREKEEPVVRETGEVVDCHLSDMLQQLHSVNAS KPSERGLVRQEEAEDPACIPIFWVSKWVDYSDKYGLGYQLCDNSVGVLFNDSTRILILY NDGDSLQYIERDGTESYLTVSSHPNSLMKKITLLKYFRNYMSEHLLKAGA
Host:	Rabbit
Clonality:	Monoclonal
Clone ID:	ARC52313
Isotype:	IgG
Conjugate:	Unconjugated
Purification:	Affinity purification.
Product Form:	Liquid
Formulation:	Supplied in Phosphate Buffered Saline, pH 7.3, with 50% Glycerol, 0.05% BSA, and 0.05% Proclin 300.
Storage:	Shipped at 4°C. Upon delivery aliquot and store at -20°C. Avoid freeze / thaw cycles.
Disclaimer:	This product is for research use only. It is not intended for diagnostic or therapeutic use.

Anti-PLK1 Antibody [ARC52313] (A306405)

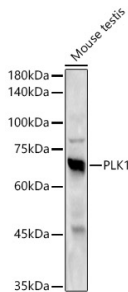
Images:



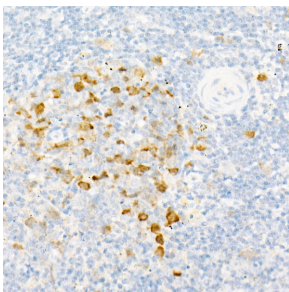
Western blot analysis of various lysates, using Anti-PLK1 Antibody [ARC52313] (A306405) at 1:1,000 dilution. The secondary antibody was Goat Anti-Rabbit IgG H&L Antibody (HRP) at 1:10,000 dilution. Lysates/proteins were present at 25µg per lane. The blocking buffer used was 3% non-fat dry milk in TBST. Detection was with a ECL Basic Kit. Exposure time: 30s.



Western blot analysis of Mouse testis, using Anti-PLK1 Antibody [ARC52313] (A306405) at 1:1,000 dilution. The secondary antibody was Goat Anti-Rabbit IgG H&L Antibody (HRP) at 1:10,000 dilution. Lysates/proteins were present at 25µg per lane. The blocking buffer used was 3% non-fat dry milk in TBST. Detection was with a ECL Basic Kit. Exposure time: 90s.



Western blot analysis of Rat testis, using Anti-PLK1 Antibody [ARC52313] (A306405) at 1:1,000 dilution. The secondary antibody was Goat Anti-Rabbit IgG H&L Antibody (HRP) at 1:10,000 dilution. Lysates/proteins were present at 25µg per lane. The blocking buffer used was 3% non-fat dry milk in TBST. Detection was with a ECL Enhanced Kit (RM00021). Exposure time: 120s.



Immunohistochemistry analysis of paraffin-embedded human colon carcinoma tissue using Anti-PLK1 Antibody [ARC52313] (A306405) at a dilution of 1:100(40x lens). Perform high pressure antigen retrieval with 10 mM citrate buffer pH 6.0 before commencing with IHC staining protocol.