

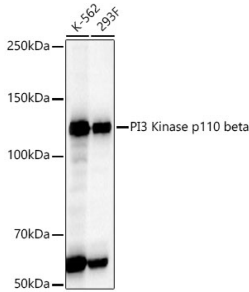
## Anti-PI3 Kinase p110 beta Antibody [ARC54484] (A306499)

### Specifications:

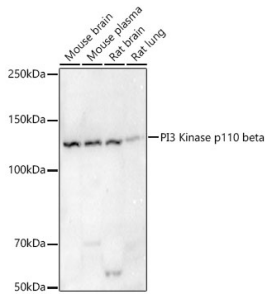
Name:	Anti-PI3 Kinase p110 beta Antibody [ARC54484]
Description:	Rabbit monoclonal [ARC54484] antibody to PI3 Kinase p110 beta.
Applications:	WB, IHC
Recommended Dilutions:	WB: 1:1,000-1:5,000, IHC: 1:100-1:500
Reactivity:	Human, Mouse, Rat
Immunogen:	Recombinant fusion protein containing a sequence corresponding to amino acids 410-600 of human PI3 Kinase p110 beta (NP_006210.1).
Sequence:	KVKTKKSTKTINPSKYQTIRKAGKVHYPVAWVNTMVDFKQQLRTGDIILHSWSSFPD ELEEMLNPMGTVQTNPYTENATALHVKFPENKKQPYYPFDKIIKAAEIASSDSAN VSSRGGKKFLPVLKEILDRDPLSQLCENEMDLIWTLRQDCREIFPQSLPKLLLSIKWN KLEDVAQLQALLQIWPK
Host:	Rabbit
Clonality:	Monoclonal
Clone ID:	ARC54484
Isotype:	IgG
Conjugate:	Unconjugated
Purification:	Affinity purification.
Product Form:	Liquid
Formulation:	Supplied in Phosphate Buffered Saline, pH 7.3, with 50% Glycerol, 0.05% BSA, and 0.05% Proclin 300.
Storage:	Shipped at 4°C. Upon delivery aliquot and store at -20°C. Avoid freeze / thaw cycles.
Disclaimer:	This product is for research use only. It is not intended for diagnostic or therapeutic use.

## Anti-PI3 Kinase p110 beta Antibody [ARC54484] (A306499)

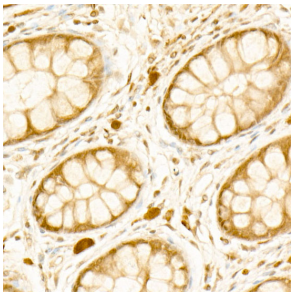
### Images:



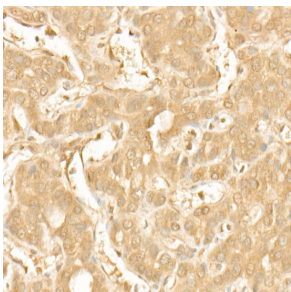
Western blot analysis of various lysates, using Anti-PI3 Kinase p110 beta Antibody [ARC54484] (A306499) at 1:2,000 dilution. The secondary antibody was Goat Anti-Rabbit IgG H&L Antibody (HRP) at 1:10,000 dilution. Lysates/proteins were present at 25µg per lane. The blocking buffer used was 3% non-fat dry milk in TBST. Detection was with a ECL Basic Kit. Exposure time: 30s.



Western blot analysis of various lysates, using Anti-PI3 Kinase p110 beta Antibody [ARC54484] (A306499) at 1:2,000 dilution. The secondary antibody was Goat Anti-Rabbit IgG H&L Antibody (HRP) at 1:10,000 dilution. Lysates/proteins were present at 25µg per lane. The blocking buffer used was 3% non-fat dry milk in TBST. Detection was with a ECL Basic Kit. Exposure time: 30s.



Immunohistochemistry analysis of paraffin-embedded human colon carcinoma tissue using Anti-PI3 Kinase p110 beta Antibody [ARC54484] (A306499) at a dilution of 1:300 (40x lens). Perform high pressure antigen retrieval with 10 mM citrate buffer pH 6.0 before commencing with IHC staining protocol.



Immunohistochemistry analysis of paraffin-embedded human liver cancer using Anti-PI3 Kinase p110 beta Antibody [ARC54484] (A306499) at a dilution of 1:300 (40x lens). Perform high pressure antigen retrieval with 10 mM citrate buffer pH 6.0 before commencing with IHC staining protocol.