

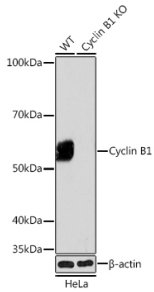
## Anti-Cyclin B1 Antibody [ARC0474] (A306720)

### Specifications:

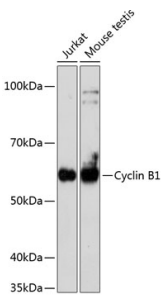
Name:	Anti-Cyclin B1 Antibody [ARC0474]
Description:	Rabbit monoclonal [ARC0474] antibody to Cyclin B1.
Applications:	WB
Recommended Dilutions:	WB: 1:500-1:2,000
Reactivity:	Human, Mouse
Immunogen:	Recombinant fusion protein containing a sequence corresponding to amino acids 3-177 of human Cyclin B1 (P14635).
Sequence:	LRVTRNSKINAENKAKINMAGAKRVPTAPAATSKPGLRPRTALGDIGNKVSEQLQAKM PMKKEAKPSATGKVIDKKLPKPLEKVPMLVPVPVSEPVPEPEPEPEPEPVKEEKLSPE PILVDTASPSMETSGCAPAEEDLCQAFSDVILAVNDVDAEDGADPNLCSEYVKDIYA Y
Host:	Rabbit
Clonality:	Monoclonal
Clone ID:	ARC0474
Isotype:	IgG
Conjugate:	Unconjugated
Purification:	Affinity purification.
Molecular Weight:	55 kDa
Product Form:	Liquid
Formulation:	Supplied in Phosphate Buffered Saline, pH 7.3, with 50% Glycerol, 0.05% BSA, and 0.02% Sodium Azide.
Storage:	Shipped at 4°C. Upon delivery aliquot and store at -20°C. Avoid freeze / thaw cycles.
Disclaimer:	This product is for research use only. It is not intended for diagnostic or therapeutic use.

## Anti-Cyclin B1 Antibody [ARC0474] (A306720)

### Images:



Western blot analysis of extracts from wild type (WT) and Cyclin B1 knockout (KO) HeLa cells, using Anti-Cyclin B1 Antibody [ARC0474] (A306720) at 1:1,000 dilution. The secondary antibody was Goat Anti-Rabbit IgG H&L Antibody (HRP) at 1:10,000 dilution. Lysates/proteins were present at 25µg per lane. The blocking buffer used was 3% non-fat dry milk in TBST. Detection was with a ECL Basic Kit. Exposure time: 3min.



Western blot analysis of extracts of various cell lines, using Anti-Cyclin B1 Antibody [ARC0474] (A306720) at 1:1,000 dilution. The secondary antibody was Goat Anti-Rabbit IgG H&L Antibody (HRP) at 1:10,000 dilution. Lysates/proteins were present at 25µg per lane. The blocking buffer used was 3% non-fat dry milk in TBST. Detection was with a ECL Basic Kit. Exposure time: 3min.