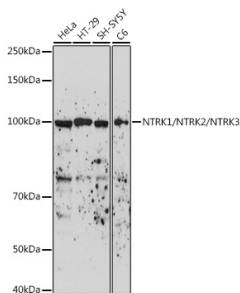


Anti-TrkA + TrkB + TrkC Antibody (A306771)

Specifications:

Name:	Anti-TrkA + TrkB + TrkC Antibody
Description:	Rabbit polyclonal antibody to TrkA + TrkB + TrkC.
Applications:	WB, ICC/IF
Recommended Dilutions:	WB: 1:100-1:500, ICC/IF: 1:50-1:200
Reactivity:	Human, Mouse, Rat
Immunogen:	A synthetic peptide corresponding to a sequence within amino acids 700-796 of human NTRK1/NTRK2/NTRK3 (NP_002520.2).
Sequence:	LYRKFTTESDVWSFGVVLWEIFTYGKQPWYQLSNTEAIDCITQGRELERPRACPPEVY AIMRGCWQREPQQRHSIKDVHARLQALAQAPPVYLDVLG
Host:	Rabbit
Clonality:	Polyclonal
Isotype:	IgG
Conjugate:	Unconjugated
Purification:	Affinity purification.
Molecular Weight:	100 kDa
Product Form:	Liquid
Formulation:	Supplied in Phosphate Buffered Saline, pH 7.3, with 50% Glycerol and 0.01% Thiomersal.
Storage:	Shipped at 4°C. Upon delivery aliquot and store at -20°C. Avoid freeze / thaw cycles.
Disclaimer:	This product is for research use only. It is not intended for diagnostic or therapeutic use.

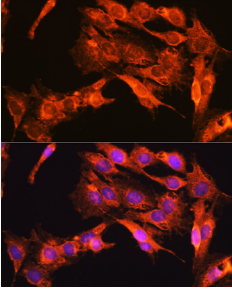
Images:



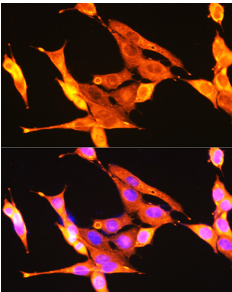
Western blot analysis of extracts of various cell lines, using Anti-TrkA + TrkB + TrkC Antibody (A306771) at 1:500 dilution. The secondary antibody was Goat Anti-Rabbit IgG H&L Antibody (HRP) at 1:10,000 dilution. Lysates/proteins were present at 25µg per lane. The blocking buffer used was 3% non-fat dry milk in TBST. Detection was with a ECL Enhanced Kit (RM00021). Exposure time: 180s.

Anti-TrkA + TrkB + TrkC Antibody (A306771)

Images continued:



Immunofluorescence analysis of C6 cells using Anti-TrkA + TrkB + TrkC Antibody (A306771) at a dilution of 1:100 (40x lens). DAPI was used to stain the cell nuclei (blue).



Immunofluorescence analysis of NIH-3T3 cells using Anti-TrkA + TrkB + TrkC Antibody (A306771) at a dilution of 1:100 (40x lens). DAPI was used to stain the cell nuclei (blue).