

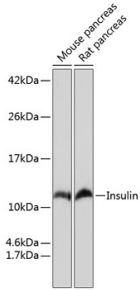
## Anti-Insulin Antibody [ARC0209] (A306938)

### Specifications:

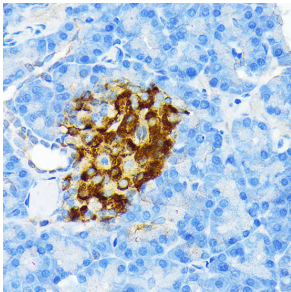
|                        |                                                                                                          |
|------------------------|----------------------------------------------------------------------------------------------------------|
| Name:                  | Anti-Insulin Antibody [ARC0209]                                                                          |
| Description:           | Rabbit monoclonal [ARC0209] antibody to Insulin.                                                         |
| Applications:          | WB, IHC, ICC/IF                                                                                          |
| Recommended Dilutions: | WB: 1:500-1:2,000, IHC: 1:50-1:200, ICC/IF: 1:50-1:200                                                   |
| Reactivity:            | Mouse, Rat                                                                                               |
| Immunogen:             | A synthetic peptide corresponding to a sequence within amino acids 1-100 of human Insulin (P01308).      |
| Sequence:              | MALWMRLLPLLALLALWGPDPAAAFVNQHLCGSHLVEALYLVCGERGFFYTPKTRREA<br>EDLQVGQVELGGGPGAGSLQPLALEGSLQKRGIVEQCCTSIC |
| Host:                  | Rabbit                                                                                                   |
| Clonality:             | Monoclonal                                                                                               |
| Clone ID:              | ARC0209                                                                                                  |
| Isotype:               | IgG                                                                                                      |
| Conjugate:             | Unconjugated                                                                                             |
| Purification:          | Affinity purification.                                                                                   |
| Molecular Weight:      | 12 kDa                                                                                                   |
| Product Form:          | Liquid                                                                                                   |
| Formulation:           | Supplied in Phosphate Buffered Saline, pH 7.3, with 50% Glycerol, 0.05% BSA, and 0.02% Sodium Azide.     |
| Storage:               | Shipped at 4°C. Upon delivery aliquot and store at -20°C. Avoid freeze / thaw cycles.                    |
| Disclaimer:            | This product is for research use only. It is not intended for diagnostic or therapeutic use.             |

## Anti-Insulin Antibody [ARC0209] (A306938)

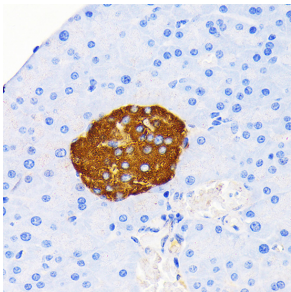
### Images:



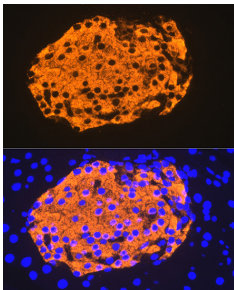
Western blot analysis of extracts of various cell lines, using Anti-Insulin Antibody [ARC0209] (A306938) at 1:1,000 dilution. The secondary antibody was Goat Anti-Rabbit IgG H&L Antibody (HRP) at 1:10,000 dilution. Lysates/proteins were present at 25µg per lane. The blocking buffer used was 3% non-fat dry milk in TBST. Detection was with a ECL Basic Kit. Exposure time: 3min.



Immunohistochemistry analysis of paraffin-embedded rat pancreatic islet using Anti-Insulin Antibody [ARC0209] (A306938) at a dilution of 1:100 (40x lens). Perform microwave antigen retrieval with 10 mM PBS buffer pH 7.2 before commencing with IHC staining protocol.



Immunohistochemistry analysis of paraffin-embedded mouse pancreatic islet using Anti-Insulin Antibody [ARC0209] (A306938) at a dilution of 1:100 (40x lens). Perform microwave antigen retrieval with 10 mM PBS buffer pH 7.2 before commencing with IHC staining protocol.



Immunofluorescence analysis of mouse pancreas using Anti-Insulin Antibody [ARC0209] (A306938) at a dilution of 1:100 (40x lens). DAPI was used to stain the cell nuclei (blue).