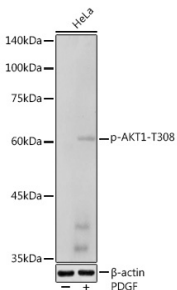


## Anti-AKT1 (phospho Thr308) Antibody (A307479)

### Specifications:

|                        |  |
|------------------------|--|
| Name:                  | Anti-AKT1 (phospho Thr308) Antibody  |
| Description:           | Rabbit polyclonal antibody to AKT1 (phospho Thr308).   |
| Applications:          | WB, IHC  |
| Recommended Dilutions: | WB: 1:500-1:1,000, IHC: 1:50-1:200   |
| Reactivity:            | Human, Mouse, Rat  |
| Immunogen:             | A synthetic phosphorylated peptide around T308 of human AKT (NP_005154.2).                   |
| Sequence:              | MKTFC  |
| Host:                  | Rabbit   |
| Clonality:             | Polyclonal   |
| Isotype:               | IgG  |
| Conjugate:             | Unconjugated   |
| Purification:          | Affinity purification.   |
| Molecular Weight:      | 60 kDa   |
| Product Form:          | Liquid   |
| Formulation:           | Supplied in Phosphate Buffered Saline, pH 7.3, with 50% Glycerol and 0.05% Proclin 300.      |
| Storage:               | Shipped at 4°C. Upon delivery aliquot and store at -20°C. Avoid freeze / thaw cycles.        |
| Disclaimer:            | This product is for research use only. It is not intended for diagnostic or therapeutic use. |

### Images:



Western blot analysis of extracts of HeLa cells, using Anti-AKT1 (phospho Thr308) Antibody (A307479) at 1:1,000 dilution. HeLa cells were treated by PDGF (100 ng/ml) at 37°C for 30 minutes after serum-starvation overnight. The secondary antibody was Goat Anti-Rabbit IgG H&L Antibody (HRP) at 1:10,000 dilution. Lysates/proteins were present at 25µg per lane. The blocking buffer used was 3% non-fat dry milk in TBST. Detection was with a ECL Basic Kit. Exposure time: 180s.