

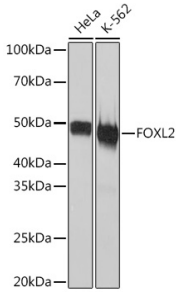
Anti-FOXL2 Antibody [ARC2055] (A307530)

Specifications:

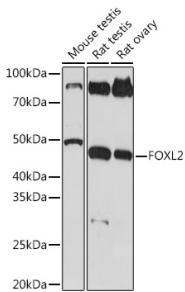
Name:	Anti-FOXL2 Antibody [ARC2055]
Description:	Rabbit monoclonal [ARC2055] antibody to FOXL2.
Applications:	WB
Recommended Dilutions:	WB: 1:500-1:2,000
Reactivity:	Human, Mouse, Rat
Immunogen:	A synthetic peptide corresponding to a sequence within amino acids 1-100 of human FOXL2 (P58012).
Sequence:	MMASYPEPEDAAGALLAPETGRTVKEPEGPPSPGKGGGGGGGTAPEKPDPAQKPPYS YVALIAMAIRESAEKRLTSLGIYQYIIAKFPFYEKNNKKGWQN
Host:	Rabbit
Clonality:	Monoclonal
Clone ID:	ARC2055
Isotype:	IgG
Conjugate:	Unconjugated
Purification:	Affinity purification.
Molecular Weight:	50 kDa
Product Form:	Liquid
Formulation:	Supplied in Phosphate Buffered Saline, pH 7.3, with 50% Glycerol, 0.05% BSA, and 0.02% Sodium Azide.
Storage:	Shipped at 4°C. Upon delivery aliquot and store at -20°C. Avoid freeze / thaw cycles.
Disclaimer:	This product is for research use only. It is not intended for diagnostic or therapeutic use.

Anti-FOXL2 Antibody [ARC2055] (A307530)

Images:



Western blot analysis of extracts of various cell lines, using Anti-FOXL2 Antibody [ARC2055] (A307530) at 1:1,000 dilution. The secondary antibody was Goat Anti-Rabbit IgG H&L Antibody (HRP) at 1:10,000 dilution. Lysates/proteins were present at 25µg per lane. The blocking buffer used was 3% non-fat dry milk in TBST. Detection was with a ECL Basic Kit. Exposure time: 90s.



Western blot analysis of extracts of various cell lines, using Anti-FOXL2 Antibody [ARC2055] (A307530) at 1:1,000 dilution. The secondary antibody was Goat Anti-Rabbit IgG H&L Antibody (HRP) at 1:10,000 dilution. Lysates/proteins were present at 25µg per lane. The blocking buffer used was 3% non-fat dry milk in TBST. Detection was with a ECL Basic Kit. Exposure time: 3min.