

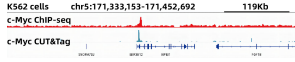
Anti-c-Myc Antibody [ARC0412] (A307622)

Specifications:

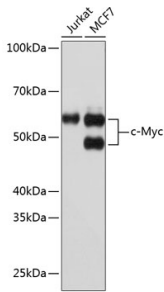
Name:	Anti-c-Myc Antibody [ARC0412]
Description:	Rabbit monoclonal [ARC0412] antibody to c-Myc.
Applications:	WB, IP, ChIP
Recommended Dilutions:	WB: 1:500-1:1,000, ChIP: 1:50-1:200, CUT&Tag: 16 cells/2µg
Reactivity:	Human, Mouse
Immunogen:	A synthetic peptide corresponding to a sequence within amino acids 1-100 of human c-Myc (P01106).
Sequence:	MPLNVSFTNRNYDLDYDSVQPYFYCDEEENFYQQQQSEIQPPAPSEDIWKKFELLPT PPLSPSRRSGLCSPSYVAVTPFSLRGDNDGGGGSFSTADQLE
Host:	Rabbit
Clonality:	Monoclonal
Clone ID:	ARC0412
Isotype:	IgG
Conjugate:	Unconjugated
Purification:	Affinity purification.
Molecular Weight:	50 - 60 kDa
Product Form:	Liquid
Formulation:	Supplied in Phosphate Buffered Saline, pH 7.3, with 50% Glycerol, 0.05% BSA, and 0.02% Sodium Azide.
Storage:	Shipped at 4°C. Upon delivery aliquot and store at -20°C. Avoid freeze / thaw cycles.
Disclaimer:	This product is for research use only. It is not intended for diagnostic or therapeutic use.

Anti-c-Myc Antibody [ARC0412] (A307622)

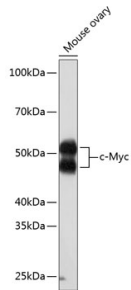
Images:



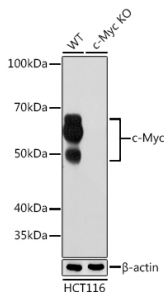
CUT&Tag was performed using the CUT&Tag Assay Kit (pAG-Tn5) for Illumina from 105 K562 cells with 2µg of Anti-c-Myc Antibody [ARC0412] (A307622), and Goat Anti-Rabbit IgG H&L Antibody. The CUT&Tag results indicate the enrichment pattern of c-Myc in representative gene loci (NPM1), as shown in figure.



Western blot analysis of extracts of various cell lines, using Anti-c-Myc Antibody [ARC0412] (A307622) at 1:1,000 dilution. The secondary antibody was Goat Anti-Rabbit IgG H&L Antibody (HRP) at 1:10,000 dilution. Lysates/proteins were present at 25µg per lane. The blocking buffer used was 3% non-fat dry milk in TBST. Detection was with a ECL Basic Kit. Exposure time: 10s.



Western blot analysis of extracts of Mouse ovary, using Anti-c-Myc Antibody [ARC0412] (A307622) at 1:1,000 dilution. The secondary antibody was Goat Anti-Rabbit IgG H&L Antibody (HRP) at 1:10,000 dilution. Lysates/proteins were present at 25µg per lane. The blocking buffer used was 3% non-fat dry milk in TBST. Detection was with a ECL Enhanced Kit (RM00021). Exposure time: 3min.



Western blot analysis of extracts from wild type (WT) and c-Myc knockout (KO) HCT116 cells, using Anti-c-Myc Antibody [ARC0412] (A307622) at 1:1,000 dilution. The secondary antibody was Goat Anti-Rabbit IgG H&L Antibody (HRP) at 1:10,000 dilution. Lysates/proteins were present at 25µg per lane. The blocking buffer used was 3% non-fat dry milk in TBST. Detection was with a ECL Basic Kit. Exposure time: 10s.