

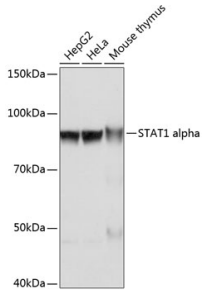
## Anti-STAT1 Antibody [ARC0042] (A307829)

### Specifications:

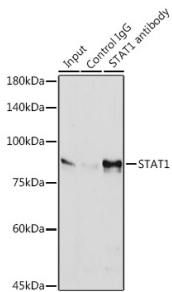
Name:	Anti-STAT1 Antibody [ARC0042]
Description:	Rabbit monoclonal [ARC0042] antibody to STAT1.
Applications:	WB, IP
Recommended Dilutions:	WB: 1:500-1:2,000, IP: 1:500-1:1,000
Reactivity:	Human, Mouse, Rat
Immunogen:	A synthetic peptide corresponding to a sequence within amino acids 1-100 of human STAT1 (P42224).
Sequence:	MSQWYELQQLDSKFLEQVHQLYDDSPMEIRQYLAQWLEKQDWEHAANDVSFATIRFH DLLSQLDDQYSRFSLENNFLLQHNIRKSKRNLQDNFQEDPIQ
Host:	Rabbit
Clonality:	Monoclonal
Clone ID:	ARC0042
Isotype:	IgG
Conjugate:	Unconjugated
Purification:	Affinity purification.
Molecular Weight:	87 kDa
Product Form:	Liquid
Formulation:	Supplied in Phosphate Buffered Saline, pH 7.3, with 50% Glycerol, 0.05% BSA, and 0.02% Sodium Azide.
Storage:	Shipped at 4°C. Upon delivery aliquot and store at -20°C. Avoid freeze / thaw cycles.
Disclaimer:	This product is for research use only. It is not intended for diagnostic or therapeutic use.

## Anti-STAT1 Antibody [ARC0042] (A307829)

### Images:



Western blot analysis of extracts of various cell lines, using Anti-STAT1 Antibody [ARC0042] (A307829) at 1:1,000 dilution. The secondary antibody was Goat Anti-Rabbit IgG H&L Antibody (HRP) at 1:10,000 dilution. Lysates/proteins were present at 25µg per lane. The blocking buffer used was 3% non-fat dry milk in TBST. Detection was with a ECL Basic Kit. Exposure time: 1s.



Immunoprecipitation analysis of 600µg extracts of HeLa cells using 3µg of Anti-STAT1 Antibody [ARC0042] (A307829). This Western blot was performed on the immunoprecipitate using Anti-STAT1 Antibody [ARC0042] (A307829) at a dilution of 1:1000.