

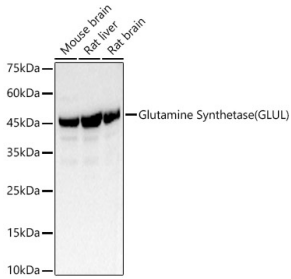
Anti-Glutamine Synthetase Antibody (A307948)

Specifications:

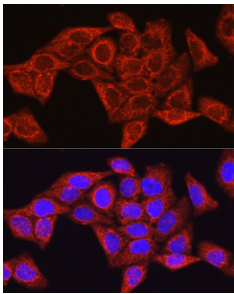
Name:	Anti-Glutamine Synthetase Antibody
Description:	Rabbit polyclonal antibody to Glutamine Synthetase.
Applications:	WB, ICC/IF
Recommended Dilutions:	WB: 1:100-1:500, ICC/IF: 1:50-1:200
Reactivity:	Human, Mouse, Rat
Immunogen:	Recombinant fusion protein containing a sequence corresponding to amino acids 1-373 of human Glutamine Synthetase (GLUL) (NP_002056.2).
Sequence:	MTTSASSHLNKGIKQVYMSLPQGEKVQAMYIWIDGTGEGLRCKTRTLTLDSEPKCVEELP EWNFDGSSTLQSEGSNSDMYLVPAAMFRDPFRKDPNKLVLCEVFKYNRRPAETNLRHT CKRIMDMVSNQHPWFGMEQEYTLMGTDGHPFGWPSNGFPGPQGPYYCGVGADRAYGRD IVEAHYRACLYAGVKIAGTNAEVMQAQWFEFQIGPCEGISMGDHLWVARFILHRVCEDF GVIATFDPKPIPGNWNGAGCHTNFSTKAMREENGLKYIEEAIEKLSKRHQYHIRAYDP KGGLDNARRLTGFHETSNINDFSAGVANRSASIRIPRTVGQEKKGYFEDRRPSANCDP FSVTEALIRTCLLNETGDEPFQYKN
Host:	Rabbit
Clonality:	Polyclonal
Isotype:	IgG
Conjugate:	Unconjugated
Purification:	Affinity purification.
Molecular Weight:	42 kDa
Product Form:	Liquid
Formulation:	Supplied in Phosphate Buffered Saline, pH 7.3, with 50% Glycerol and 0.01% Thiomersal.
Storage:	Shipped at 4°C. Upon delivery aliquot and store at -20°C. Avoid freeze / thaw cycles.
Disclaimer:	This product is for research use only. It is not intended for diagnostic or therapeutic use.

Anti-Glutamine Synthetase Antibody (A307948)

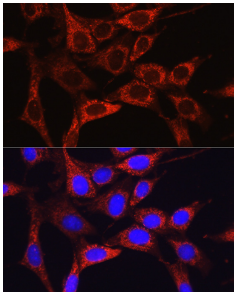
Images:



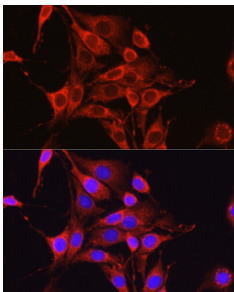
Western blot analysis of various lysates, using Anti-Glutamine Synthetase Antibody (A307948) at 1:400 dilution. The secondary antibody was Goat Anti-Rabbit IgG H&L Antibody (HRP) at 1:10,000 dilution. Lysates/proteins were present at 25µg per lane. The blocking buffer used was 3% non-fat dry milk in TBST. Detection was with a ECL Basic Kit. Exposure time: 10s.



Immunofluorescence analysis of HeLa cells using Anti-Glutamine Synthetase Antibody (A307948) at a dilution of 1:100 (40x lens). DAPI was used to stain the cell nuclei (blue).



Immunofluorescence analysis of NIH/3T3 cells using Anti-Glutamine Synthetase Antibody (A307948) at a dilution of 1:100 (40x lens). DAPI was used to stain the cell nuclei (blue).



Immunofluorescence analysis of PC-12 cells using Anti-Glutamine Synthetase Antibody (A307948) at a dilution of 1:100 (40x lens). DAPI was used to stain the cell nuclei (blue).