

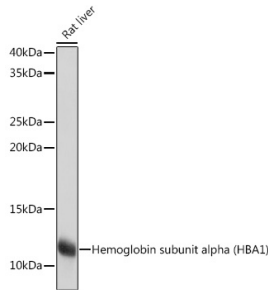
Anti-Hemoglobin subunit alpha Antibody [ARC1510] (A307978)

Specifications:

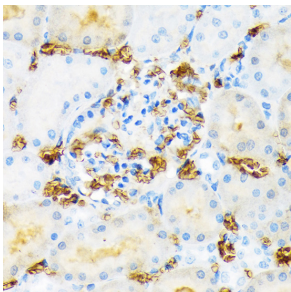
Name:	Anti-Hemoglobin subunit alpha Antibody [ARC1510]
Description:	Rabbit monoclonal [ARC1510] antibody to Hemoglobin subunit alpha.
Applications:	WB, IHC, ICC/IF
Recommended Dilutions:	WB: 1:500-1:2,000, IHC: 1:50-1:200, ICC/IF: 1:50-1:200
Reactivity:	Human, Mouse, Rat
Immunogen:	A synthetic peptide corresponding to a sequence within amino acids 1-100 of human Hemoglobin subunit alpha (HBA1) (HBA1) (P69905).
Sequence:	MVLSPADKTNVKAAWGKVGAHAGEYGAELERMFLSFPTTKTYFPHFDLSHGSAQVKG HGKKVADALTNAVAHVDDMPNALSALSDLHAHKLRVDPVNFK
Host:	Rabbit
Clonality:	Monoclonal
Clone ID:	ARC1510
Isotype:	IgG
Conjugate:	Unconjugated
Purification:	Affinity purification.
Molecular Weight:	11 kDa
Product Form:	Liquid
Formulation:	Supplied in Phosphate Buffered Saline, pH 7.3, with 50% Glycerol, 0.05% BSA, and 0.02% Sodium Azide.
Storage:	Shipped at 4°C. Upon delivery aliquot and store at -20°C. Avoid freeze / thaw cycles.
Disclaimer:	This product is for research use only. It is not intended for diagnostic or therapeutic use.

Anti-Hemoglobin subunit alpha Antibody [ARC1510] (A307978)

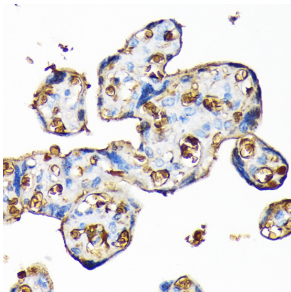
Images:



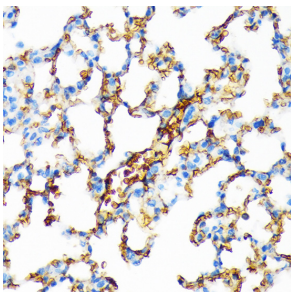
Western blot analysis of extracts of Rat liver, using Anti-Hemoglobin subunit alpha Antibody [ARC1510] (A307978) at 1:1,000 dilution. The secondary antibody was Goat Anti-Rabbit IgG H&L Antibody (HRP) at 1:10,000 dilution. Lysates/proteins were present at 25 μ g per lane. The blocking buffer used was 3% non-fat dry milk in TBST. Detection was with a ECL Basic Kit. Exposure time: 1s.



Immunohistochemistry analysis of paraffin-embedded rat kidney red blood cells using Anti-Hemoglobin subunit alpha Antibody [ARC1510] (A307978) at a dilution of 1:100 (40x lens). Perform microwave antigen retrieval with 10 mM Tris/EDTA buffer pH 9.0 before commencing with IHC staining protocol.



Immunohistochemistry analysis of paraffin-embedded blood cell staining in human placenta tissue using Anti-Hemoglobin subunit alpha Antibody [ARC1510] (A307978) at a dilution of 1:100 (40x lens). Perform microwave antigen retrieval with 10 mM Tris/EDTA buffer pH 9.0 before commencing with IHC staining protocol.



Immunohistochemistry analysis of paraffin-embedded blood cell staining in mouse lung tissue using Anti-Hemoglobin subunit alpha Antibody [ARC1510] (A307978) at a dilution of 1:100 (40x lens). Perform microwave antigen retrieval with 10 mM Tris/EDTA buffer pH 9.0 before commencing with IHC staining protocol.