

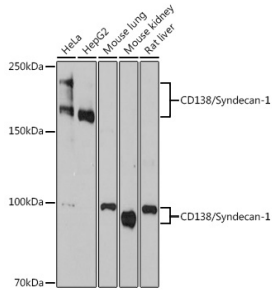
Anti-Syndecan-1 Antibody [ARC0918] (A308330)

Specifications:

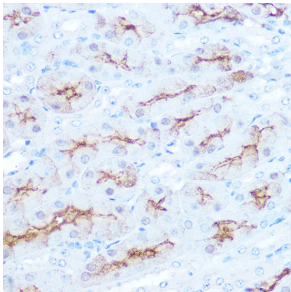
Name:	Anti-Syndecan-1 Antibody [ARC0918]
Description:	Rabbit monoclonal [ARC0918] antibody to Syndecan-1.
Applications:	WB, IHC, ICC/IF
Recommended Dilutions:	WB: 1:500-1:2,000, IHC: 1:50-1:200, ICC/IF: 1:50-1:200
Reactivity:	Human, Mouse, Rat
Immunogen:	Recombinant fusion protein containing a sequence corresponding to amino acids 23-254 of human Syndecan 1 (P18827).
Sequence:	QIVATNLPPEDQDGSDDSDNFGSGAGALQDITLSQQTPSTWKDTQLLTAIPTSPEP TGLEATAASTSTLPAGEGPKGEAVVLPEVEPGLTAREQEATPRPRETTQLPTTHLAS TTTATTAQEPATSHPHRDMQPGHHETSTPAGPSQADLHTPHTEDGGPSATERAAEDGA SSQLPAAEGSGEQDFTFETSGENTAVVAVEPDRRNQSPVDQGATGASQGLLDRKEVLG
Host:	Rabbit
Clonality:	Monoclonal
Clone ID:	ARC0918
Isotype:	IgG
Conjugate:	Unconjugated
Purification:	Affinity purification.
Molecular Weight:	90 - 100 kDa / 180 - 230 kDa
Product Form:	Liquid
Formulation:	Supplied in Phosphate Buffered Saline, pH 7.3, with 50% Glycerol, 0.05% BSA, and 0.02% Sodium Azide.
Storage:	Shipped at 4°C. Upon delivery aliquot and store at -20°C. Avoid freeze / thaw cycles.
Disclaimer:	This product is for research use only. It is not intended for diagnostic or therapeutic use.

Anti-Syndecan-1 Antibody [ARC0918] (A308330)

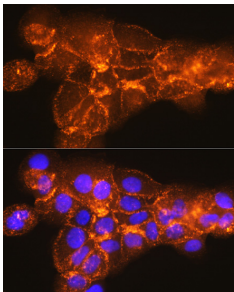
Images:



Western blot analysis of extracts of various cell lines, using Anti-Syndecan-1 Antibody [ARC0918] (A308330) at 1:1,000 dilution. The secondary antibody was Goat Anti-Rabbit IgG H&L Antibody (HRP) at 1:10,000 dilution. Lysates/proteins were present at 25µg per lane. The blocking buffer used was 3% non-fat dry milk in TBST. Detection was with a ECL Basic Kit. Exposure time: 90s.



Immunohistochemistry analysis of paraffin-embedded mouse kidney using Anti-Syndecan-1 Antibody [ARC0918] (A308330) at a dilution of 1:100 (40x lens). Perform microwave antigen retrieval with 10 mM PBS buffer pH 7.2 before commencing with IHC staining protocol.



Immunofluorescence analysis of A431 cells using Anti-Syndecan-1 Antibody [ARC0918] (A308330) at a dilution of 1:100 (40x lens). DAPI was used to stain the cell nuclei (blue).