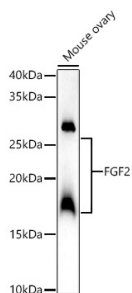


Anti-FGF2 Antibody (A308408)

Specifications:

Name:	Anti-FGF2 Antibody
Description:	Rabbit polyclonal antibody to FGF2.
Applications:	WB
Recommended Dilutions:	WB: 1:1,000-1:5,000
Reactivity:	Human, Mouse, Rat
Immunogen:	A synthetic peptide corresponding to a sequence within amino acids 100-200 of human FGF2 (NP_001997.5).
Sequence:	RAPERVGGRGRGRGTAAPRAAPAARGSRPGPAGTMAAGSITTLPALPEDGGSGAFPPG HFKDPKRLYCKNGGFFLRHPDGRVDGVREKSDPHIKLQLQAE
Host:	Rabbit
Clonality:	Polyclonal
Isotype:	IgG
Conjugate:	Unconjugated
Purification:	Affinity purification.
Molecular Weight:	18 kDa / 22 kDa / 24 kDa
Product Form:	Liquid
Formulation:	Supplied in Phosphate Buffered Saline, pH 7.3, with 50% Glycerol and 0.01% Thiomersal.
Storage:	Shipped at 4°C. Upon delivery aliquot and store at -20°C. Avoid freeze / thaw cycles.
Disclaimer:	This product is for research use only. It is not intended for diagnostic or therapeutic use.

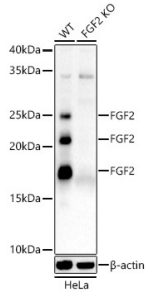
Images:



Western blot analysis of Mouse ovary, using Anti-FGF2 Antibody (A308408) at 1:2,000 dilution. The secondary antibody was Goat Anti-Rabbit IgG H&L Antibody (HRP) at 1:10,000 dilution. Lysates/proteins were present at 25µg per lane. The blocking buffer used was 3% non-fat dry milk in TBST. Detection was with a ECL Basic Kit. Exposure time: 60s.

Anti-FGF2 Antibody (A308408)

Images continued:



Western blot analysis of extracts from wild type(WT) and FGF2 Rabbit polyclonal antibody knockout (KO) HeLa cells, using Anti-FGF2 Antibody (A308408) at 1:2,000 dilution. The secondary antibody was Goat Anti-Rabbit IgG H&L Antibody (HRP) at 1:10,000 dilution. Lysates/proteins were present at 25 μ g per lane. The blocking buffer used was 3% non-fat dry milk in TBST. Detection was with a ECL Basic Kit. Exposure time: 60s.