

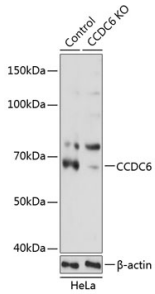
## Anti-CCDC6 Antibody (A308479)

### Specifications:

Name:	Anti-CCDC6 Antibody
Description:	Rabbit polyclonal antibody to CCDC6.
Applications:	WB, ICC/IF
Recommended Dilutions:	WB: 1:500-1:2,000, ICC/IF: 1:50-1:200
Reactivity:	Human, Mouse, Rat
Immunogen:	Recombinant fusion protein containing a sequence corresponding to amino acids 55-222 of human CCDC6 (NP_005427.2).
Sequence:	RLEELTNRLASLQQENKVLKIELETYKCLKCKALQEENRDLRKASVTIQARAEQEEEFISNTLFKKIQALQKEKETLAVNYEKEEEFLTNELSRKLMQLQHEKAELEQHLEQEQEFQVNKLMKKIKKLENDTISKQLTLEQLRREKIDLENTLEQEQEALVNRLWKRMD
Host:	Rabbit
Clonality:	Polyclonal
Isotype:	IgG
Conjugate:	Unconjugated
Purification:	Affinity purification.
Molecular Weight:	68 kDa
Product Form:	Liquid
Formulation:	Supplied in Phosphate Buffered Saline, pH 7.3, with 50% Glycerol and 0.01% Thiomersal.
Storage:	Shipped at 4°C. Upon delivery aliquot and store at -20°C. Avoid freeze / thaw cycles.
Disclaimer:	This product is for research use only. It is not intended for diagnostic or therapeutic use.

## Anti-CCDC6 Antibody (A308479)

### Images:



Western blot analysis of extracts from normal (control) and CCDC6 knockout (KO) HeLa cells, using Anti-CCDC6 Antibody (A308479) at 1:1,000 dilution. The secondary antibody was Goat Anti-Rabbit IgG H&L Antibody (HRP) at 1:10,000 dilution. Lysates/proteins were present at 25 $\mu$ g per lane. The blocking buffer used was 3% non-fat dry milk in TBST. Detection was with a ECL Basic Kit. Exposure time: 1s.