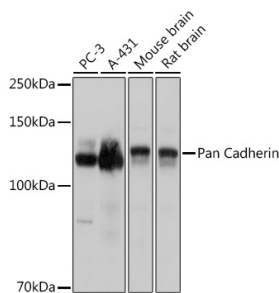


## Anti-pan Cadherin Antibody (A308508)

### Specifications:

|                        |   |
|------------------------|---|
| Name:                  | Anti-pan Cadherin Antibody  |
| Description:           | Rabbit polyclonal antibody to pan Cadherin.   |
| Applications:          | WB, IP  |
| Recommended Dilutions: | WB: 1:500-1:2,000, IP: 1:1,000-1:5,000  |
| Reactivity:            | Human, Mouse, Rat   |
| Immunogen:             | A synthetic peptide corresponding to a sequence within amino acids 800-882 of human pan-cadherin (NP_004351.1). |
| Sequence:              | RPANPDEIGNFIDENLKAADTDPTAPPYDSSLVFDYEGSGSEAASLSSLNSSESDKDQ<br>DYDYLGNRFKKLADMYGGGEDD                            |
| Host:                  | Rabbit  |
| Clonality:             | Polyclonal  |
| Isotype:               | IgG   |
| Conjugate:             | Unconjugated  |
| Purification:          | Affinity purification.  |
| Molecular Weight:      | 135 kDa   |
| Product Form:          | Liquid  |
| Formulation:           | Supplied in Phosphate Buffered Saline, pH 7.3, with 50% Glycerol and 0.01% Thiomersal.                          |
| Storage:               | Shipped at 4°C. Upon delivery aliquot and store at -20°C. Avoid freeze / thaw cycles.                           |
| Disclaimer:            | This product is for research use only. It is not intended for diagnostic or therapeutic use.                    |

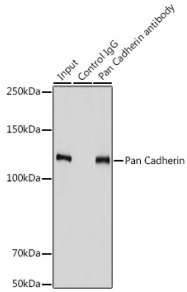
### Images:



Western blot analysis of extracts of various cell lines, using Anti-pan Cadherin Antibody (A308508) at 1:3,000 dilution. The secondary antibody was Goat Anti-Rabbit IgG H&L Antibody (HRP) at 1:10,000 dilution. Lysates/proteins were present at 25µg per lane. The blocking buffer used was 3% non-fat dry milk in TBST. Detection was with a ECL Basic Kit. Exposure time: 1s.

## Anti-pan Cadherin Antibody (A308508)

Images continued:



Immunoprecipitation analysis of 900 $\mu$ g extracts of PC-3 cells using 3 $\mu$ g of Anti-pan Cadherin Antibody (A308508). This Western blot was performed on the immunoprecipitate using Anti-pan Cadherin Antibody (A308508) at a dilution of 1:3000.