

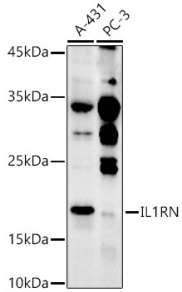
## Anti-IL-1RA Antibody (A308517)

### Specifications:

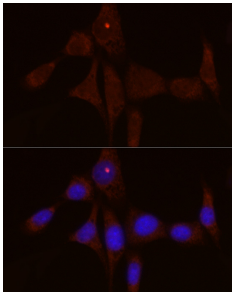
Name:	Anti-IL-1RA Antibody
Description:	Rabbit polyclonal antibody to IL-1RA.
Applications:	WB, ICC/IF
Recommended Dilutions:	WB: 1:100-1:500, ICC/IF: 1:50-1:200
Reactivity:	Human, Mouse
Immunogen:	Recombinant fusion protein containing a sequence corresponding to amino acids 27-178 of mouse IL1RN (NP_001034790.1).
Sequence:	RPSGKRPCMKQAFRIWDTNQKTFYLRNNQLIAGYLQGPNIKLEEKIDMVPIDLHSVFL GIHGGKLCCLSCAKSGDDIKLQLEEVNITDLSKNKEEDKRFTFIRSEKGPPTTSFESAAC PGWFLCTTLEADRPVSLTNTPEEPLIVTKFYFQEDQ
Host:	Rabbit
Clonality:	Polyclonal
Isotype:	IgG
Conjugate:	Unconjugated
Purification:	Affinity purification.
Molecular Weight:	18 kDa
Product Form:	Liquid
Formulation:	Supplied in Phosphate Buffered Saline, pH 7.3, with 50% Glycerol and 0.05% Proclin 300.
Storage:	Shipped at 4°C. Upon delivery aliquot and store at -20°C. Avoid freeze / thaw cycles.
Disclaimer:	This product is for research use only. It is not intended for diagnostic or therapeutic use.

## Anti-IL-1RA Antibody (A308517)

### Images:



Western blot analysis of extracts of various cell lines, using Anti-IL-1RA Antibody (A308517) at 1:500 dilution. The secondary antibody was Goat Anti-Rabbit IgG H&L Antibody (HRP) at 1:10,000 dilution. Lysates/proteins were present at 25 $\mu$ g per lane. The blocking buffer used was 3% non-fat dry milk in TBST. Detection was with a ECL Enhanced Kit (RM00021). Exposure time: 180s.



Immunofluorescence analysis of NIH/3T3 cells using Anti-IL-1RA Antibody (A308517) at a dilution of 1:50 (40x lens). DAPI was used to stain the cell nuclei (blue).