

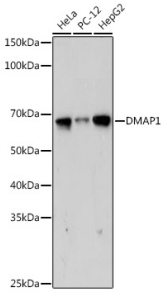
## Anti-DMAP1 Antibody [ARC2462] (A308546)

### Specifications:

Name:	Anti-DMAP1 Antibody [ARC2462]
Description:	Rabbit monoclonal [ARC2462] antibody to DMAP1.
Applications:	WB
Recommended Dilutions:	WB: 1:500-1:1,000
Reactivity:	Human, Mouse, Rat
Immunogen:	A synthetic peptide corresponding to a sequence within amino acids 368-467 of human DMAP1 (Q9NPF5).
Sequence:	RSDLVLLYELKQACANCEYELQMLRHRHEALARAGVLGGPATPASGPGPASAEPVTE PGLGPDPKDTIIDVVGAPLTPNSRKRRESASSSSSVKKAKKP
Host:	Rabbit
Clonality:	Monoclonal
Clone ID:	ARC2462
Isotype:	IgG
Conjugate:	Unconjugated
Purification:	Affinity purification.
Molecular Weight:	60 kDa
Product Form:	Liquid
Formulation:	Supplied in Phosphate Buffered Saline, pH 7.3, with 50% Glycerol, 0.05% BSA, and 0.02% Sodium Azide.
Storage:	Shipped at 4°C. Upon delivery aliquot and store at -20°C. Avoid freeze / thaw cycles.
Disclaimer:	This product is for research use only. It is not intended for diagnostic or therapeutic use.

## Anti-DMAP1 Antibody [ARC2462] (A308546)

### Images:



Western blot analysis of extracts of various cell lines, using Anti-DMAP1 Antibody [ARC2462] (A308546) at 1:1,000 dilution. The secondary antibody was Goat Anti-Rabbit IgG H&L Antibody (HRP) at 1:10,000 dilution. Lysates/proteins were present at 25 $\mu$ g per lane. The blocking buffer used was 3% non-fat dry milk in TBST. Detection was with a ECL Basic Kit. Exposure time: 180s.