

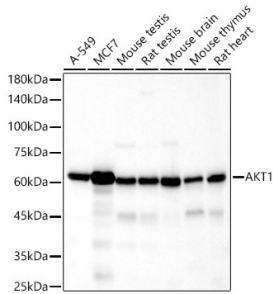
Anti-AKT1 Antibody [ARC51585] (A308667)

Specifications:

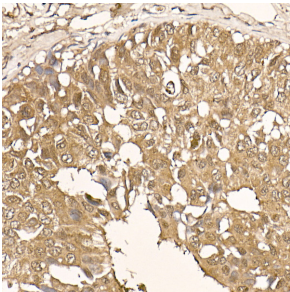
Name:	Anti-AKT1 Antibody [ARC51585]
Description:	Rabbit monoclonal [ARC51585] antibody to AKT1.
Applications:	WB, IHC, ICC/IF, IP
Recommended Dilutions:	WB: 1:1,000-1:5,000, IHC: 1:50-1:200, ICC/IF: 1:50-1:200, IP: 1:500-1:1,000
Reactivity:	Human, Mouse, Rat
Immunogen:	A synthetic peptide corresponding to a sequence within amino acids 381-480 of human AKT1 (P31749).
Sequence:	SGLLKDPKQRLGGSEDAKEIMQHRFFAGIVWQHVVYEKKLSPPFKPQVTSETDTRYF DEEFTAQMITITPPDQDDSMECVDSERRPHFPQFSYSASGTA
Host:	Rabbit
Clonality:	Monoclonal
Clone ID:	ARC51585
Isotype:	IgG
Conjugate:	Unconjugated
Purification:	Affinity purification.
Molecular Weight:	60 kDa
Product Form:	Liquid
Formulation:	Supplied in Phosphate Buffered Saline, pH 7.3, with 50% Glycerol, 0.05% BSA, and 0.05% Proclin 300.
Storage:	Shipped at 4°C. Upon delivery aliquot and store at -20°C. Avoid freeze / thaw cycles.
Disclaimer:	This product is for research use only. It is not intended for diagnostic or therapeutic use.

Anti-AKT1 Antibody [ARC51585] (A308667)

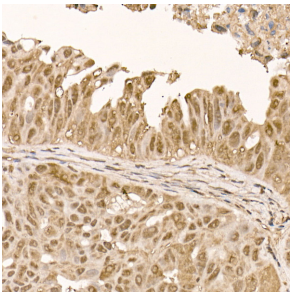
Images:



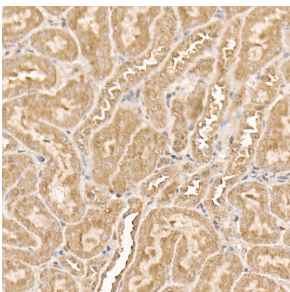
Western blot analysis of various lysates, using Anti-AKT1 Antibody [ARC51585] (A308667) at 1:2,000 dilution. The secondary antibody was Goat Anti-Rabbit IgG H&L Antibody (HRP) at 1:10,000 dilution. Lysates/proteins were present at 25µg per lane. The blocking buffer used was 3% non-fat dry milk in TBST. Detection was with a ECL Basic Kit. Exposure time: 25s.



Immunohistochemistry analysis of paraffin-embedded human breast cancer tissue using Anti-AKT1 Antibody [ARC51585] (A308667) at a dilution of 1:100 (40x lens). Perform high pressure antigen retrieval with 10 mM citrate buffer pH 6.0 before commencing with IHC staining protocol.



Immunohistochemistry analysis of paraffin-embedded human colon carcinoma tissue using Anti-AKT1 Antibody [ARC51585] (A308667) at a dilution of 1:100 (40x lens). Perform high pressure antigen retrieval with 10 mM citrate buffer pH 6.0 before commencing with IHC staining protocol.



Immunohistochemistry analysis of paraffin-embedded mouse kidney using Anti-AKT1 Antibody [ARC51585] (A308667) at a dilution of 1:100 (40x lens). Perform high pressure antigen retrieval with 10 mM citrate buffer pH 6.0 before commencing with IHC staining protocol.