

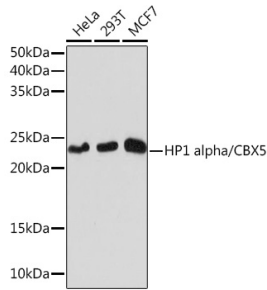
## Anti-HP1 alpha Antibody [ARC0244] (A308742)

### Specifications:

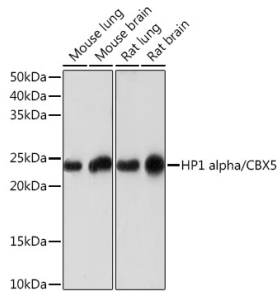
Name:	Anti-HP1 alpha Antibody [ARC0244]
Description:	Rabbit monoclonal [ARC0244] antibody to HP1 alpha.
Applications:	WB, IHC, ICC/IF, IP
Recommended Dilutions:	WB: 1:500-1:2,000, IHC: 1:50-1:200, ICC/IF: 1:50-1:200, IP: 1:500-1:1,000
Reactivity:	Human, Mouse, Rat
Immunogen:	A synthetic peptide corresponding to a sequence within amino acids 92-191 of human HP1 alpha/CBX5 (P45973).
Sequence:	SNFSNSADDIKSKKKREQSNDIARGFERGLEPEKIIGATDSCGDLMFLMKWKDTDEAD LVLAKEANVKCPQIVIAFYEERLTWHAYPEDAENKEKETAKS
Host:	Rabbit
Clonality:	Monoclonal
Clone ID:	ARC0244
Isotype:	IgG
Conjugate:	Unconjugated
Purification:	Affinity purification.
Molecular Weight:	22 kDa
Product Form:	Liquid
Formulation:	Supplied in Phosphate Buffered Saline, pH 7.3, with 50% Glycerol, 0.05% BSA, and 0.02% Sodium Azide.
Storage:	Shipped at 4°C. Upon delivery aliquot and store at -20°C. Avoid freeze / thaw cycles.
Disclaimer:	This product is for research use only. It is not intended for diagnostic or therapeutic use.

## Anti-HP1 alpha Antibody [ARC0244] (A308742)

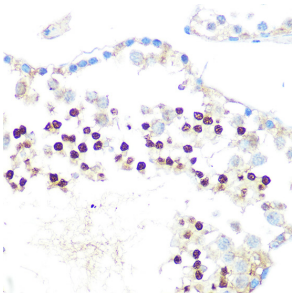
### Images:



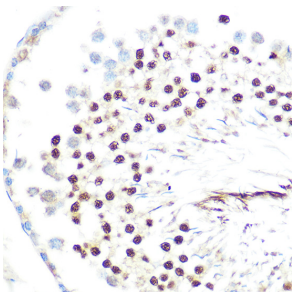
Western blot analysis of extracts of various cell lines, using Anti-HP1 alpha Antibody [ARC0244] (A308742) at 1:1,000 dilution. The secondary antibody was Goat Anti-Rabbit IgG H&L Antibody (HRP) at 1:10,000 dilution. Lysates/proteins were present at 25µg per lane. The blocking buffer used was 3% non-fat dry milk in TBST. Detection was with a ECL Basic Kit. Exposure time: 10s.



Western blot analysis of extracts of various cell lines, using Anti-HP1 alpha Antibody [ARC0244] (A308742) at 1:1,000 dilution. The secondary antibody was Goat Anti-Rabbit IgG H&L Antibody (HRP) at 1:10,000 dilution. Lysates/proteins were present at 25µg per lane. The blocking buffer used was 3% non-fat dry milk in TBST. Detection was with a ECL Basic Kit. Exposure time: 3min.



Immunohistochemistry analysis of paraffin-embedded rat testis using Anti-HP1 alpha Antibody [ARC0244] (A308742) at a dilution of 1:100 (40x lens). Perform microwave antigen retrieval with 10 mM PBS buffer pH 7.2 before commencing with IHC staining protocol.



Immunohistochemistry analysis of paraffin-embedded mouse testis using Anti-HP1 alpha Antibody [ARC0244] (A308742) at a dilution of 1:100 (40x lens). Perform microwave antigen retrieval with 10 mM PBS buffer pH 7.2 before commencing with IHC staining protocol.