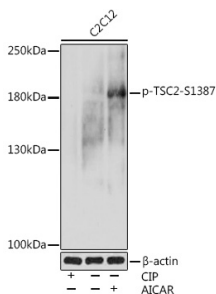


## Anti-Tuberin (phospho Ser1387) Antibody (A308810)

### Specifications:

Name:	Anti-Tuberin (phospho Ser1387) Antibody
Description:	Rabbit polyclonal antibody to Tuberin (phospho Ser1387).
Applications:	WB
Recommended Dilutions:	WB: 1:500-1:2,000
Reactivity:	Human, Mouse, Rat
Immunogen:	A synthetic phosphorylated peptide around S1387 of human Tuberin/TSC2 (NP_000539.2).
Sequence:	SSSSP
Host:	Rabbit
Clonality:	Polyclonal
Isotype:	IgG
Conjugate:	Unconjugated
Purification:	Affinity purification.
Molecular Weight:	200 kDa
Product Form:	Liquid
Formulation:	Supplied in Phosphate Buffered Saline, pH 7.3, with 50% Glycerol and 0.01% Thiomersal.
Storage:	Shipped at 4°C. Upon delivery aliquot and store at -20°C. Avoid freeze / thaw cycles.
Disclaimer:	This product is for research use only. It is not intended for diagnostic or therapeutic use.

### Images:



Western blot analysis of extracts of C2C12 cells, using Anti-Tuberin (phospho Ser1387) Antibody (A308810) at 1:1,000 dilution. C2C12 cells were treated by CIP(20uL/400ul) at 37°C for 1 hour. C2C12 cells were treated by AICAR (0.5 mM) at 37°C for 30 minutes after serum-starvation overnight. The secondary antibody was Goat Anti-Rabbit IgG H&L Antibody (HRP) at 1:10,000 dilution. Lysates/proteins were present at 25µg per lane. The blocking buffer used was 3% BSA. Detection was with a ECL Basic Kit. Exposure time: 60s.