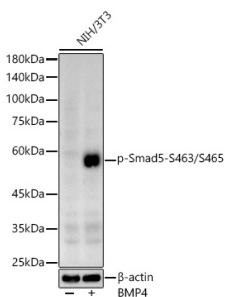


Anti-SMAD5 (phospho Ser463 + Ser465) Antibody (A308813)

Specifications:

Name:	Anti-SMAD5 (phospho Ser463 + Ser465) Antibody
Description:	Rabbit polyclonal antibody to SMAD5 (phospho Ser463 + Ser465).
Applications:	WB, IHC
Recommended Dilutions:	WB: 1:500-1:1,000, IHC: 1:50-1:200
Reactivity:	Human, Mouse, Rat
Immunogen:	A synthetic phosphorylated peptide around S463 & S465 of human Phospho-Smad5-S463/S465 (NP_005894.3).
Sequence:	SSVS
Host:	Rabbit
Clonality:	Polyclonal
Isotype:	IgG
Conjugate:	Unconjugated
Purification:	Affinity purification.
Product Form:	Liquid
Formulation:	Supplied in Phosphate Buffered Saline, pH 7.3, with 50% Glycerol and 0.05% Proclin 300.
Storage:	Shipped at 4°C. Upon delivery aliquot and store at -20°C. Avoid freeze / thaw cycles.
Disclaimer:	This product is for research use only. It is not intended for diagnostic or therapeutic use.

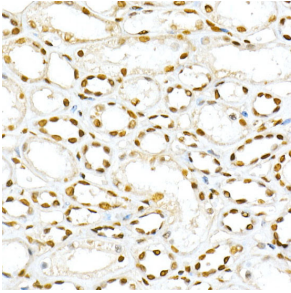
Images:



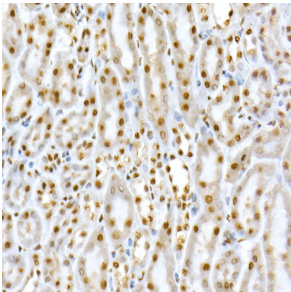
Western blot analysis of extracts of NIH/3T3, using Anti-SMAD5 (phospho Ser463 + Ser465) Antibody (A308813) at 1:600 dilution. NIH/3T3 cells were treated by BMP4 (50 ng/ml) at 37°C for 30 minutes after serum-starvation overnight. The secondary antibody was Goat Anti-Rabbit IgG H&L Antibody (HRP) at 1:10,000 dilution. Lysates/proteins were present at 25µg per lane. The blocking buffer used was 3% non-fat dry milk in TBST. Detection was with a ECL Basic Kit. Exposure time: 90s.

Anti-SMAD5 (phospho Ser463 + Ser465) Antibody (A308813)

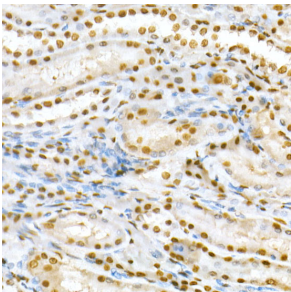
Images continued:



Immunohistochemistry analysis of paraffin-embedded human kidney using Anti-SMAD5 (phospho Ser463 + Ser465) Antibody (A308813) at a dilution of 1:50 (40x lens). Perform high pressure antigen retrieval with 10 mM citrate buffer pH 6.0 before commencing with IHC staining protocol.



Immunohistochemistry analysis of paraffin-embedded mouse kidney using Anti-SMAD5 (phospho Ser463 + Ser465) Antibody (A308813) at a dilution of 1:50 (40x lens). Perform high pressure antigen retrieval with 10 mM citrate buffer pH 6.0 before commencing with IHC staining protocol.



Immunohistochemistry analysis of paraffin-embedded rat kidney using Anti-SMAD5 (phospho Ser463 + Ser465) Antibody (A308813) at a dilution of 1:50 (40x lens). Perform high pressure antigen retrieval with 10 mM citrate buffer pH 6.0 before commencing with IHC staining protocol.