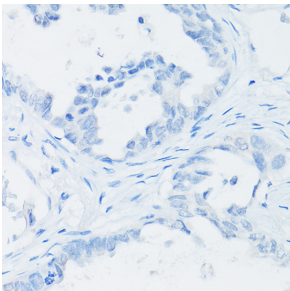


## Anti-Thyroglobulin Antibody [ARC1971] (A308824)

### Specifications:

Name:	Anti-Thyroglobulin Antibody [ARC1971]
Description:	Rabbit monoclonal [ARC1971] antibody to Thyroglobulin.
Applications:	IHC, ICC/IF
Recommended Dilutions:	IHC: 1:50-1:200, ICC/IF: 1:50-1:200
Reactivity:	Human, Mouse, Rat
Immunogen:	A synthetic peptide corresponding to a sequence within amino acids 1000-1100 of human Thyroglobulin (P01266).
Sequence:	STLSFYQRRRFSPDDDSAGASALLRSGPYMPQCDAFGSWEPVQCHAGTGHCWCVDEKGG FIPGSLTARSLQIPQCPTTCEKSRTSGLLSSWKQARSQENPSP
Host:	Rabbit
Clonality:	Monoclonal
Clone ID:	ARC1971
Isotype:	IgG
Conjugate:	Unconjugated
Purification:	Affinity purification.
Product Form:	Liquid
Formulation:	Supplied in Phosphate Buffered Saline, pH 7.3, with 50% Glycerol, 0.05% BSA, and 0.02% Sodium Azide.
Storage:	Shipped at 4°C. Upon delivery aliquot and store at -20°C. Avoid freeze / thaw cycles.
Disclaimer:	This product is for research use only. It is not intended for diagnostic or therapeutic use.

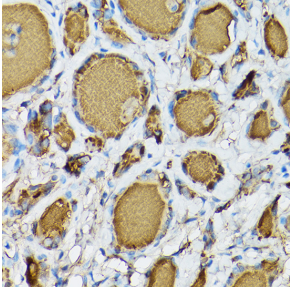
### Images:



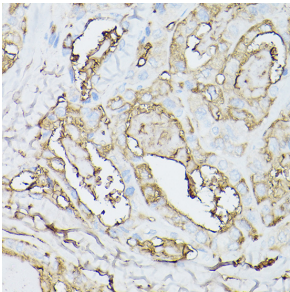
Immunohistochemistry analysis of paraffin-embedded human lung adenocarcinoma (negative control sample) using Anti-Thyroglobulin Antibody [ARC1971] (A308824) at a dilution of 1:100 (40x lens). Perform high pressure antigen retrieval with 10 mM citrate buffer pH 6.0 before commencing with IHC staining protocol.

## Anti-Thyroglobulin Antibody [ARC1971] (A308824)

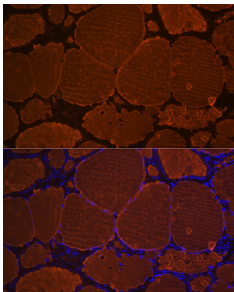
Images continued:



Immunohistochemistry analysis of paraffin-embedded human normal thyroid using Anti-Thyroglobulin Antibody [ARC1971] (A308824) at a dilution of 1:100 (40x lens). Perform high pressure antigen retrieval with 10 mM citrate buffer pH 6.0 before commencing with IHC staining protocol.



Immunohistochemistry analysis of paraffin-embedded human thyroid cancer using Anti-Thyroglobulin Antibody [ARC1971] (A308824) at a dilution of 1:100 (40x lens). Perform high pressure antigen retrieval with 10 mM citrate buffer pH 6.0 before commencing with IHC staining protocol.



Immunofluorescence analysis of rat thyroid using Anti-Thyroglobulin Antibody [ARC1971] (A308824) at a dilution of 1:100 (40x lens). DAPI was used to stain the cell nuclei (blue).