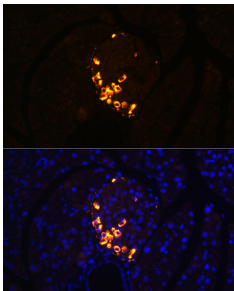


Anti-Glucagon Antibody [ARC1143] (A308918)

Specifications:

Name:	Anti-Glucagon Antibody [ARC1143]
Description:	Rabbit monoclonal [ARC1143] antibody to Glucagon.
Applications:	IHC, ICC/IF
Recommended Dilutions:	IHC: 1:50-1:200, ICC/IF: 1:50-1:200
Reactivity:	Mouse, Rat
Immunogen:	A synthetic peptide corresponding to a sequence within amino acids 81-180 of human GLP-2 (P01275).
Sequence:	TKRNRNNIAKRHDEFERHAEGTFTSDVSSYLEGQAAKEFIAWLVKGRGRDRDFPEEVAI VEELGRRHADGSFSDEMNTILDNLAARDFINWLIQTKITDRK
Host:	Rabbit
Clonality:	Monoclonal
Clone ID:	ARC1143
Isotype:	IgG
Conjugate:	Unconjugated
Purification:	Affinity purification.
Product Form:	Liquid
Formulation:	Supplied in Phosphate Buffered Saline, pH 7.3, with 50% Glycerol, 0.05% BSA, and 0.02% Sodium Azide.
Storage:	Shipped at 4°C. Upon delivery aliquot and store at -20°C. Avoid freeze / thaw cycles.
Disclaimer:	This product is for research use only. It is not intended for diagnostic or therapeutic use.

Images:



Immunofluorescence analysis of rat pancreas using Anti-Glucagon Antibody [ARC1143] (A308918) at a dilution of 1:100. DAPI was used to stain the cell nuclei (blue).