

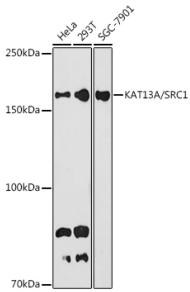
## Anti-KAT13A / SRC1 Antibody [ARC1395] (A309015)

### Specifications:

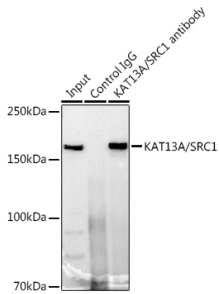
Name:	Anti-KAT13A / SRC1 Antibody [ARC1395]
Description:	Rabbit monoclonal [ARC1395] antibody to KAT13A / SRC1.
Applications:	WB, IP
Recommended Dilutions:	WB: 1:500-1:1,000, IP: 1:500-1:1,000
Reactivity:	Human
Immunogen:	Recombinant fusion protein containing a sequence corresponding to amino acids 400-750 of human KAT13A / SRC1 (Q15788).
Sequence:	<p>VARSSTLPPSNSNMVSTRINRQQSSDLHSSSHSNSSNSQGSFGCSPGSQIVANVALNQ GQASSQSSNPSLNLNNSPMEGTGISLAQFMSPRRQVTSGLATRPRMPNNSFPPNISTL SSPVGMTSSACNNNRSYSNIPVTSLQGMNEGPNNVGFSAASPVLQRMSSQNPSRL NIQPAKAESKDNKEIASILNEMIQSDNSSSDGKPLDSGLLHNDRLSDGDSKYSQTSH KLVQLLTTAEQQLRHADIDTSCKDVLCTGTSSASANSSSGGSCPSSHSSLTERHKI LHRLLEQEGSPDITTLSEVDPKKDSASTSVSVTGQVQGNSSIKLELDASKKKESKDHQ LLR</p>
Host:	Rabbit
Clonality:	Monoclonal
Clone ID:	ARC1395
Isotype:	IgG
Conjugate:	Unconjugated
Purification:	Affinity purification.
Molecular Weight:	180 kDa
Product Form:	Liquid
Formulation:	Supplied in Phosphate Buffered Saline, pH 7.3, with 50% Glycerol, 0.05% BSA, and 0.02% Sodium Azide.
Storage:	Shipped at 4°C. Upon delivery aliquot and store at -20°C. Avoid freeze / thaw cycles.
Disclaimer:	This product is for research use only. It is not intended for diagnostic or therapeutic use.

## Anti-KAT13A / SRC1 Antibody [ARC1395] (A309015)

### Images:



Western blot analysis of extracts of various cell lines, using Anti-KAT13A / SRC1 Antibody [ARC1395] (A309015) at 1:1,000 dilution. The secondary antibody was Goat Anti-Rabbit IgG H&L Antibody (HRP) at 1:10,000 dilution. Lysates/proteins were present at 25µg per lane. The blocking buffer used was 3% non-fat dry milk in TBST. Detection was with a ECL Basic Kit. Exposure time: 180s.



Immunoprecipitation analysis of 300µg extracts of 293T cells using 3µg of Anti-KAT13A / SRC1 Antibody [ARC1395] (A309015). This Western blot was performed on the immunoprecipitate using Anti-KAT13A / SRC1 Antibody [ARC1395] (A309015) at a dilution of 1:1000.