

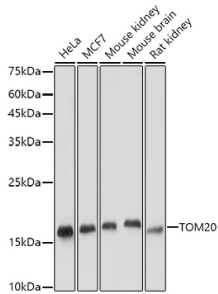
## Anti-TOMM20 Antibody [ARC5002-01] (A309191)

### Specifications:

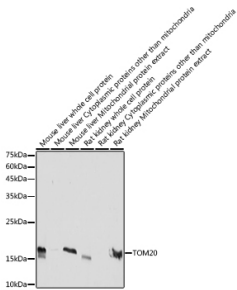
Name:	Anti-TOMM20 Antibody [ARC5002-01]
Description:	Rabbit monoclonal [ARC5002-01] antibody to TOMM20.
Applications:	WB, IHC, ICC/IF, IP
Recommended Dilutions:	WB: 1:2,000-1:6,000, IHC: 1:50-1:200, ICC/IF: 1:100-1:500, IP: 1:500-1:1,000
Reactivity:	Human, Mouse, Rat
Immunogen:	Recombinant fusion protein containing a sequence corresponding to amino acids 20-145 of human TOM20 (NP_055580.1).
Sequence:	YCIYFDRKRRSDPNFKNRLRERRKKQKLAKERAGLSKLPDLKDAEAVQKFFLEEIQLG EELLAQGEYEKGV DHLTNAIAVCGQPQQLLQVLQQTLP PPVFQMLLTKLPTISQRIVS AQSLAEDDVE
Host:	Rabbit
Clonality:	Monoclonal
Clone ID:	ARC5002-01
Isotype:	IgG
Conjugate:	Unconjugated
Purification:	Affinity purification.
Molecular Weight:	16 kDa
Product Form:	Liquid
Formulation:	Supplied in Phosphate Buffered Saline, pH 7.3, with 50% Glycerol, 0.05% BSA, and 0.05% Proclin 300.
Storage:	Shipped at 4°C. Upon delivery aliquot and store at -20°C. Avoid freeze / thaw cycles.
Disclaimer:	This product is for research use only. It is not intended for diagnostic or therapeutic use.

## Anti-TOMM20 Antibody [ARC5002-01] (A309191)

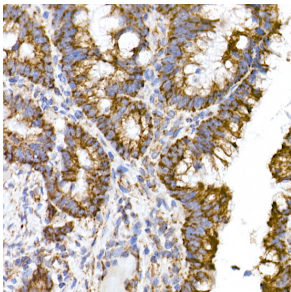
### Images:



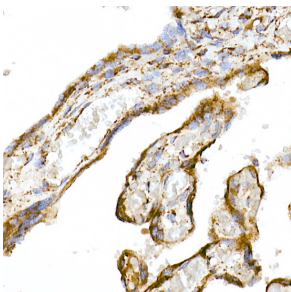
Western blot analysis of extracts of various cell lines, using Anti-TOMM20 Antibody [ARC5002-01] (A309191) at 1:5,000 dilution. The secondary antibody was Goat Anti-Rabbit IgG H&L Antibody (HRP) at 1:10,000 dilution. Lysates/proteins were present at 25 $\mu$ g per lane. The blocking buffer used was 3% non-fat dry milk in TBST. Detection was with a ECL Basic Kit. Exposure time: 60s.



Western blot analysis of extracts of various cell lines, using Anti-TOMM20 Antibody [ARC5002-01] (A309191) at 1:5,000 dilution. The secondary antibody was Goat Anti-Rabbit IgG H&L Antibody (HRP) at 1:10,000 dilution. Lysates/proteins were present at 25 $\mu$ g per lane. The blocking buffer used was 3% non-fat dry milk in TBST. Detection was with a ECL Basic Kit. Exposure time: 10s.



Immunohistochemistry analysis of paraffin-embedded human colon carcinoma tissue using Anti-TOMM20 Antibody [ARC5002-01] (A309191) at a dilution of 1:50(40x lens). Perform microwave antigen retrieval with 10 mM Tris/EDTA buffer pH 9.0 before commencing with IHC staining protocol.



Immunohistochemistry analysis of paraffin-embedded human placenta using Anti-TOMM20 Antibody [ARC5002-01] (A309191) at a dilution of 1:50(40x lens). Perform microwave antigen retrieval with 10 mM Tris/EDTA buffer pH 9.0 before commencing with IHC staining protocol.