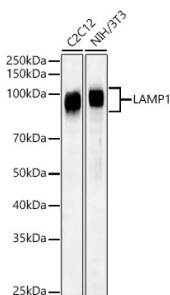


## Anti-LAMP1 Antibody (A309397)

### Specifications:

Name:	Anti-LAMP1 Antibody
Description:	Rabbit polyclonal antibody to LAMP1.
Applications:	WB, ICC/IF
Recommended Dilutions:	WB: 1:100-1:500, ICC/IF: 1:50-1:200
Reactivity:	Human
Immunogen:	Recombinant protein of mouse LAMP1.
Host:	Rabbit
Clonality:	Polyclonal
Isotype:	IgG
Conjugate:	Unconjugated
Purification:	Affinity purification.
Molecular Weight:	90 - 120 kDa
Product Form:	Liquid
Formulation:	Supplied in Phosphate Buffered Saline, pH 7.3, with 50% Glycerol and 0.01% Thiomersal.
Storage:	Shipped at 4°C. Upon delivery aliquot and store at -20°C. Avoid freeze / thaw cycles.
Disclaimer:	This product is for research use only. It is not intended for diagnostic or therapeutic use.

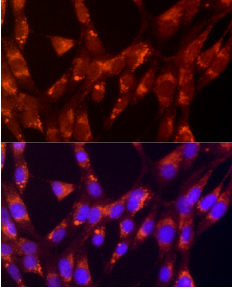
### Images:



Western blot analysis of various lysates, using Anti-LAMP1 Antibody (A309397) at 1:500 dilution. The secondary antibody was Goat Anti-Rabbit IgG H&L Antibody (HRP) at 1:10,000 dilution. Lysates/proteins were present at 25 $\mu$ g per lane. The blocking buffer used was 3% non-fat dry milk in TBST. Detection was with a ECL Basic Kit. Exposure time: 60s.

## Anti-LAMP1 Antibody (A309397)

Images continued:



Immunofluorescence analysis of NIH/3T3 cells using Anti-LAMP1 Antibody (A309397) at a dilution of 1:50 (40x lens). DAPI was used to stain the cell nuclei (blue).