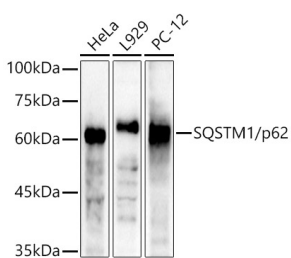


Anti-SQSTM1 / p62 Antibody (A309479)

Specifications:

Name:	Anti-SQSTM1 / p62 Antibody
Description:	Rabbit polyclonal antibody to SQSTM1 / p62.
Applications:	WB, IHC, ICC/IF, IP
Recommended Dilutions:	WB: 1:2,000-1:4,000, IHC: 1:50-1:200, ICC/IF: 1:50-1:200, IP: 1:500-1:1,000
Reactivity:	Human, Mouse, Rat
Immunogen:	Recombinant protein of human SQSTM1/p62.
Host:	Rabbit
Clonality:	Polyclonal
Isotype:	IgG
Conjugate:	Unconjugated
Purification:	Affinity purification.
Molecular Weight:	62 kDa
Product Form:	Liquid
Formulation:	Supplied in Phosphate Buffered Saline, pH 7.3, with 50% Glycerol and 0.05% Proclin 300.
Storage:	Shipped at 4°C. Upon delivery aliquot and store at -20°C. Avoid freeze / thaw cycles.
Disclaimer:	This product is for research use only. It is not intended for diagnostic or therapeutic use.

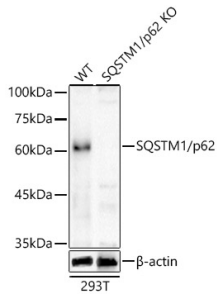
Images:



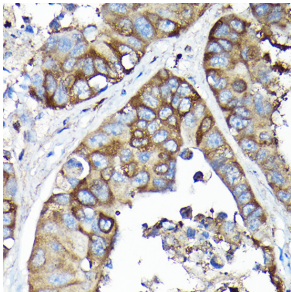
Western blot analysis of extracts of various cell lines, using Anti-SQSTM1 / p62 Antibody (A309479) at 1:4,000 dilution. The secondary antibody was Goat Anti-Rabbit IgG H&L Antibody (HRP) at 1:10,000 dilution. Lysates/proteins were present at 25 μ g per lane. The blocking buffer used was 3% non-fat dry milk in TBST. Detection was with a ECL Basic Kit. Exposure time: 3s.

Anti-SQSTM1 / p62 Antibody (A309479)

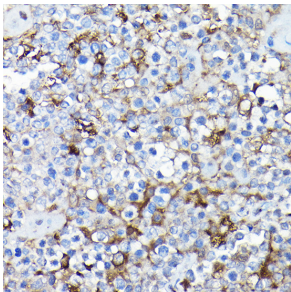
Images continued:



Western blot analysis of extracts from wild type (WT) and SQSTM1/p62 knockout (KO) 293T cells, using Anti-SQSTM1 / p62 Antibody (A309479) at 1:4,000 dilution. The secondary antibody was Goat Anti-Rabbit IgG H&L Antibody (HRP) at 1:10,000 dilution. Lysates/proteins were present at 25µg per lane. The blocking buffer used was 3% non-fat dry milk in TBST. Detection was with a ECL Basic Kit. Exposure time: 3s.



Immunohistochemistry analysis of paraffin-embedded human lung adenocarcinoma using Anti-SQSTM1 / p62 Antibody (A309479) at a dilution of 1:100 (40x lens). Perform high pressure antigen retrieval with 10 mM citrate buffer pH 6.0 before commencing with IHC staining protocol.



Immunohistochemistry analysis of paraffin-embedded human extranodal NK-T cell lymphoma using Anti-SQSTM1 / p62 Antibody (A309479) at a dilution of 1:100 (40x lens). Perform high pressure antigen retrieval with 10 mM citrate buffer pH 6.0 before commencing with IHC staining protocol.