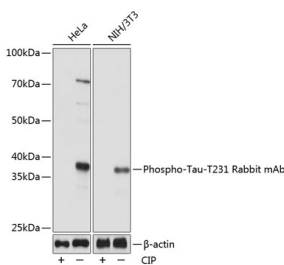


## Anti-Tau (phospho Thr231) Antibody [ARC0021] (A309486)

### Specifications:

Name:	Anti-Tau (phospho Thr231) Antibody [ARC0021]
Description:	Rabbit monoclonal [ARC0021] antibody to Tau (phospho Thr231).
Applications:	WB, ICC/IF
Recommended Dilutions:	WB: 1:500-1:2,000, ICC/IF: 1:50-1:200
Reactivity:	Human, Mouse, Rat
Immunogen:	A synthesized peptide derived from human Phospho-Tau (T231).
Host:	Rabbit
Clonality:	Monoclonal
Clone ID:	ARC0021
Isotype:	IgG
Conjugate:	Unconjugated
Purification:	Affinity purification.
Molecular Weight:	38 kDa
Product Form:	Liquid
Formulation:	Supplied in Phosphate Buffered Saline, pH 7.3, with 50% Glycerol, 0.05% BSA, and 0.02% Sodium Azide.
Storage:	Shipped at 4°C. Upon delivery aliquot and store at -20°C. Avoid freeze / thaw cycles.
Disclaimer:	This product is for research use only. It is not intended for diagnostic or therapeutic use.

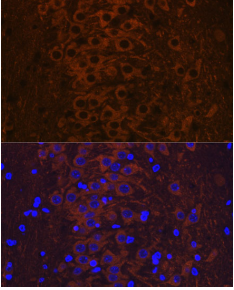
### Images:



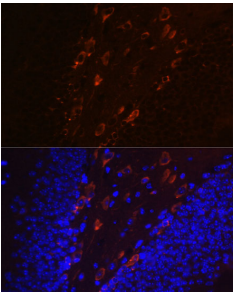
Western blot analysis of extracts of various cell lines, using Anti-Tau (phospho Thr231) Antibody [ARC0021] (A309486) at 1:1,000 dilution. HeLa and NIH/3T3 cells were treated by CIP(20uL/400ul) at 37°C for 1 hour. The secondary antibody was Goat Anti-Rabbit IgG H&L Antibody (HRP) at 1:10,000 dilution. Lysates/proteins were present at 25µg per lane. The blocking buffer used was 3% non-fat dry milk in TBST. Detection was with a ECL Basic Kit. Exposure time: 3s.

## Anti-Tau (phospho Thr231) Antibody [ARC0021] (A309486)

Images continued:



Immunofluorescence analysis of rat brain using Anti-Tau (phospho Thr231) Antibody [ARC0021] (A309486). DAPI was used to stain the cell nuclei (blue).



Immunofluorescence analysis of mouse brain using Anti-Tau (phospho Thr231) Antibody [ARC0021] (A309486). DAPI was used to stain the cell nuclei (blue).