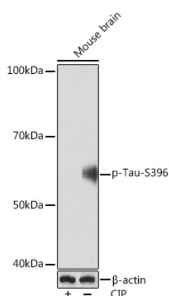


## Anti-Tau (phospho Ser396) Antibody [ARC1573] (A309489)

### Specifications:

Name:	Anti-Tau (phospho Ser396) Antibody [ARC1573]
Description:	Rabbit monoclonal [ARC1573] antibody to Tau (phospho Ser396).
Applications:	WB, IHC
Recommended Dilutions:	WB: 1:500-1:2,000, IHC: 1:50-1:200
Reactivity:	Human, Mouse, Rat
Immunogen:	A phospho specific peptide corresponding to residues surrounding S396 of human Tau.
Host:	Rabbit
Clonality:	Monoclonal
Clone ID:	ARC1573
Isotype:	IgG
Conjugate:	Unconjugated
Purification:	Affinity purification.
Molecular Weight:	60 kDa
Product Form:	Liquid
Formulation:	Supplied in Phosphate Buffered Saline, pH 7.3, with 50% Glycerol, 0.05% BSA, and 0.02% Sodium Azide.
Storage:	Shipped at 4°C. Upon delivery aliquot and store at -20°C. Avoid freeze / thaw cycles.
Disclaimer:	This product is for research use only. It is not intended for diagnostic or therapeutic use.

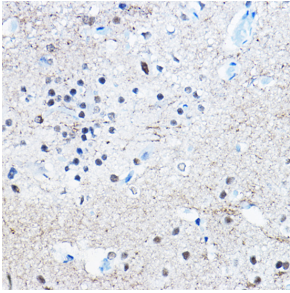
### Images:



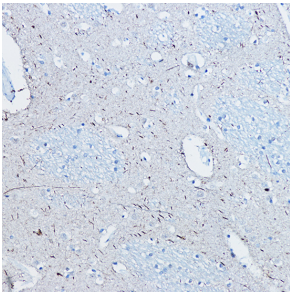
Western blot analysis of extracts of Mouse brain, using Anti-Tau (phospho Ser396) Antibody [ARC1573] (A309489) at 1:1,000 dilution. Mouse brain were treated by CIP(20uL/400ul) at 37°C for 1 hour. The secondary antibody was Goat Anti-Rabbit IgG H&L Antibody (HRP) at 1:10,000 dilution. Lysates/proteins were present at 25µg per lane. The blocking buffer used was 3% BSA. Detection was with a ECL Basic Kit. Exposure time: 90s.

## Anti-Tau (phospho Ser396) Antibody [ARC1573] (A309489)

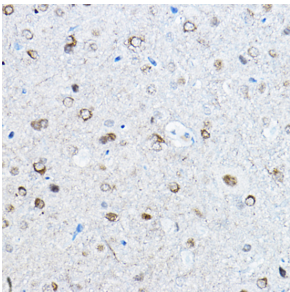
Images continued:



Immunohistochemistry analysis of paraffin-embedded rat brain using Anti-Tau (phospho Ser396) Antibody [ARC1573] (A309489) at a dilution of 1:100 (40x lens). Perform high pressure antigen retrieval with 10 mM citrate buffer pH 6.0 before commencing with IHC staining protocol.



Immunohistochemistry analysis of paraffin-embedded human brain tissue using Anti-Tau (phospho Ser396) Antibody [ARC1573] (A309489) at a dilution of 1:100 (40x lens). Perform high pressure antigen retrieval with 10 mM citrate buffer pH 6.0 before commencing with IHC staining protocol.



Immunohistochemistry analysis of paraffin-embedded mouse brain using Anti-Tau (phospho Ser396) Antibody [ARC1573] (A309489) at a dilution of 1:100 (40x lens). Perform high pressure antigen retrieval with 10 mM citrate buffer pH 6.0 before commencing with IHC staining protocol.