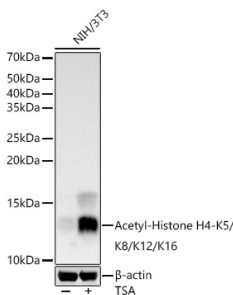


# Anti-Histone H4 (acetyl Lys5 + Lys8 + Lys12 + Lys16) Antibody (A309705)

## Specifications:

Name:	Anti-Histone H4 (acetyl Lys5 + Lys8 + Lys12 + Lys16) Antibody
Description:	Rabbit polyclonal antibody to Histone H4 (acetyl Lys5 + Lys8 + Lys12 + Lys16).
Applications:	WB, IHC
Recommended Dilutions:	WB: 1:100-1:500, IHC: 1:50-1:200
Reactivity:	Human, Mouse, Rat
Immunogen:	A synthetic acetylated peptide around K5/K8/K12/K16 of human Histone H4.
Host:	Rabbit
Clonality:	Polyclonal
Isotype:	IgG
Conjugate:	Unconjugated
Purification:	Affinity purification.
Product Form:	Liquid
Formulation:	Supplied in Phosphate Buffered Saline, pH 7.3, with 50% Glycerol and 0.05% Proclin 300.
Storage:	Shipped at 4°C. Upon delivery aliquot and store at -20°C. Avoid freeze / thaw cycles.
Disclaimer:	This product is for research use only. It is not intended for diagnostic or therapeutic use.

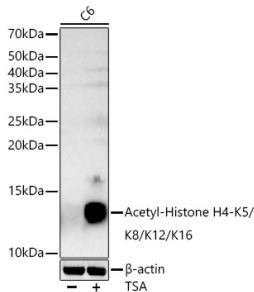
## Images:



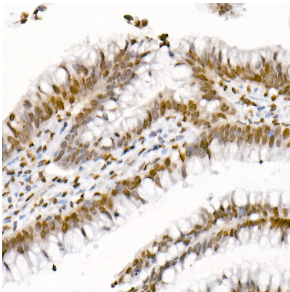
Western blot analysis of extracts of NIH/3T3 cells, using Anti-Histone H4 (acetyl Lys5 + Lys8 + Lys12 + Lys16) Antibody (A309705) at 1:500 dilution. NIH/3T3 cells were treated by TSA (1  $\mu$ M) at 37°C for 18 hours. The secondary antibody was Goat Anti-Rabbit IgG H&L Antibody (HRP) at 1:10,000 dilution. Lysates/proteins were present at 25 $\mu$ g per lane. The blocking buffer used was 3% non-fat dry milk in TBST. Detection was with a ECL Basic Kit. Exposure time: 5s.

## Anti-Histone H4 (acetyl Lys5 + Lys8 + Lys12 + Lys16) Antibody (A309705)

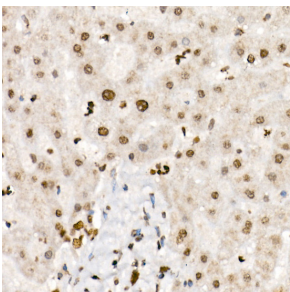
Images continued:



Western blot analysis of extracts of C6 cells, using Anti-Histone H4 (acetyl Lys5 + Lys8 + Lys12 + Lys16) Antibody (A309705) at 1:500 dilution. C6 cells were treated by TSA (1 uM) at 37°C for 18 hours. The secondary antibody was Goat Anti-Rabbit IgG H&L Antibody (HRP) at 1:10,000 dilution. Lysates/proteins were present at 25µg per lane. The blocking buffer used was 3% non-fat dry milk in TBST. Detection was with a ECL Basic Kit. Exposure time: 30s.



Immunohistochemistry analysis of paraffin-embedded human colon carcinoma tissue using Anti-Histone H4 (acetyl Lys5 + Lys8 + Lys12 + Lys16) Antibody (A309705) at a dilution of 1:50 (40x lens). Perform high pressure antigen retrieval with 10 mM citrate buffer pH 6.0 before commencing with IHC staining protocol.



Immunohistochemistry analysis of paraffin-embedded human liver using Anti-Histone H4 (acetyl Lys5 + Lys8 + Lys12 + Lys16) Antibody (A309705) at a dilution of 1:50 (40x lens). Perform high pressure antigen retrieval with 10 mM citrate buffer pH 6.0 before commencing with IHC staining protocol.