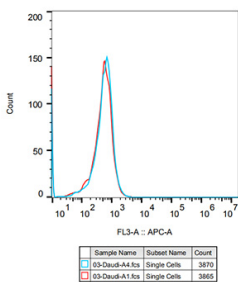


Rabbit IgG [ARC5105-03] - Isotype Control (A310007)

Specifications:

Name:	Rabbit IgG [ARC5105-03] - Isotype Control
Description:	Rabbit IgG [ARC5105-03] - Isotype Control
Applications:	IHC, ICC/IF, IP, ChIP, Flow Cytometry
Recommended Dilutions:	IHC: 1:50-1:200, ICC/IF: 1:50-1:200, Flow Cytometry: 1:50-1:200, IP: 1:50-1:200, ChIP: 1:50-1:200
Host:	Rabbit
Clonality:	Monoclonal
Clone ID:	ARC5105-03
Isotype:	IgG
Conjugate:	Unconjugated
Purification:	Protein A/G purification.
Molecular Weight:	16 kDa
Product Form:	Liquid
Formulation:	Supplied in Phosphate Buffered Saline, pH 7.3, with 50% Glycerol, 0.05% BSA, and 0.05% Proclin 300.
Storage:	Shipped at 4°C. Upon delivery aliquot and store at -20°C. Avoid freeze / thaw cycles.
Disclaimer:	This product is for research use only. It is not intended for diagnostic or therapeutic use.

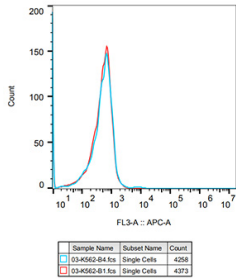
Images:



Flow cytometry analysis of Daudi cells, stained with Rabbit IgG [ARC5105-03] - Isotype Control (A310007), (10 µg/ml, blue line) followed by goat anti-Rabbit polyclonal antibody APC (1:600 dilution) staining. Non-fluorescently stained Daudi cells was used as blank control (red line).

Rabbit IgG [ARC5105-03] - Isotype Control (A310007)

Images continued:



Flow cytometry analysis of K562 cells, stained with Rabbit IgG [ARC5105-03] - Isotype Control (A310007), (10 µg/ml, blue line) followed by staining with goat anti-Rabbit polyclonal antibody APC (1:600 dilution). Non-fluorescently stained K562 cells was used as blank control (red line).