

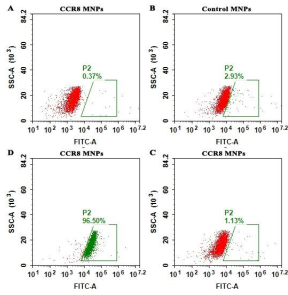
## Synthetic Membrane Nanoparticle Human CCR8 Protein (A317352)

### Specifications:

Name:	Synthetic Membrane Nanoparticle Human CCR8 Protein
Description:	Full-length transmembrane human CCR8 protein expressed on the cell surface of membrane nanoparticles.
Applications:	Western Blot, FACS
Expression System:	HEK293 cells
Nature:	Synthetic
Protein Species:	Human
Protein Length:	Full length protein.
Molecular Weight:	Full length human CCR8 protein has a MW of 40.7 kDa.
Conjugate:	Unconjugated
Product Form:	Lyophilized
Concentration:	Reconstitution dependent.
Formulation:	Lyophilized from sterile Phosphate Buffered Saline, pH 7.4. Normally 5%-8% Trehalose is added as a protectant before lyophilization.
Storage:	Shipped at 4°C. Lyophilized: Store at -20°C to -80°C. Reconstituted: Aliquot and store at -80°C. Product is stable for one year. Avoid freeze/thaw cycles.
Disclaimer:	This product is for research use only. It is not intended for diagnostic or therapeutic use.

# Synthetic Membrane Nanoparticle Human CCR8 Protein (A317352)

Images:



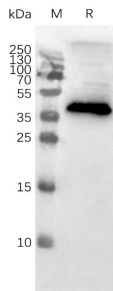
FACS analysis of Synthetic Membrane Nanoparticle Human CCR8 Protein (A317352):

A. Negative Control 1: Synthetic Membrane Nanoparticle Human CCR8 Protein (A317352) samples were stained only with Goat Anti-Human IgG Antibody (Alexa Fluor 488).

B. Negative Control 2: Control membrane nanoparticles samples were stained with Anti-CCR8 Humanized Antibody [10A11] - Azide free (A318895) at 2 µg/ml, followed by Goat Anti-Human IgG Antibody (Alexa Fluor 488).

C. Negative Control 3: Synthetic Membrane Nanoparticle Human CCR8 Protein (A317352) samples were stained with Anti-Claudin 18.2 Antibody (an irrelevant antibody) at 2 µg/ml, followed by Goat Anti-Human IgG Antibody (Alexa Fluor 488).

D. Synthetic Membrane Nanoparticle Human CCR8 Protein (A317352) samples were stained with Anti-CCR8 Humanized Antibody [10A11] - Azide free (A318895) at 2 µg/ml, followed by Goat Anti-Human IgG Antibody (Alexa Fluor 488).



Western blot analysis of Synthetic Membrane Nanoparticle Human CCR8 Protein (A317352).