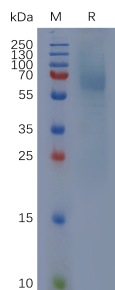


Recombinant Cynomolgus macaque IgHE Protein (6xHis Tag) (A317553)

Specifications:

Name:	Recombinant Cynomolgus macaque IgHE Protein (6xHis Tag)
Applications:	SDS-PAGE
Expression System:	HEK293 cells
Nature:	Recombinant
Protein Species:	Cynomolgus macaque
Protein Length:	Protein fragment.
Sequence:	IgHE(Ala1-Gly432)+6xHisTag
Tag:	C-terminal 6xHis Tag
Molecular Weight:	The protein has a predicted molecular mass of 48.3 kDa after removal of the signal peptide. The apparent molecular mass of clgHE-His is approximately 55-70 kDa due to glycosylation.
Conjugate:	Unconjugated
Purity:	> 85%, by SDS-PAGE and Coomassie blue staining.
Product Form:	Lyophilized
Concentration:	Reconstitution dependent.
Formulation:	Lyophilized from sterile Phosphate Buffered Saline, pH 7.4. Normally 5%-8% Trehalose is added as a protectant before lyophilization.
Storage:	Shipped at 4°C. Lyophilized: Store at -20°C to -80°C. Reconstituted: Aliquot and store at -80°C. Product is stable for one year. Avoid freeze/thaw cycles.
Disclaimer:	This product is for research use only. It is not intended for diagnostic or therapeutic use.

Images:



Recombinant Cynomolgus macaque IgHE Protein (6xHis Tag) (A317553) on SDS-PAGE under reducing conditions.