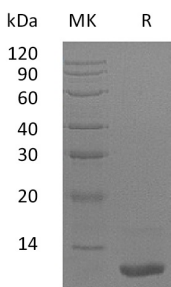


Recombinant Human LR3-IGF1 Protein (A317615)

Specifications:

Name:	Recombinant Human LR3-IGF1 Protein
Applications:	SDS-PAGE
Expression System:	Escherichia coli
Nature:	Recombinant
Protein Species:	Human
Protein Length:	Protein fragment.
Amino Acids:	Gly49-Ala118
Molecular Weight:	9.1 kDa
Conjugate:	Unconjugated
Purity:	> 95%, by SDS-PAGE under reducing conditions.
Product Form:	Lyophilized
Concentration:	Reconstitution dependent.
Formulation:	Lyophilized from a 0.2 μ m filtered solution of 20mM NaAc-HAc, 4% Mannitol, pH 4.5.
Storage:	Shipped at 4°C. Lyophilized: Store at -20°C to -80°C. Reconstituted: Aliquot and store at -80°C. Product is stable for one year. Avoid freeze/thaw cycles.
Disclaimer:	This product is for research use only. It is not intended for diagnostic or therapeutic use.

Images:



Recombinant Human LR3-IGF1 Protein (A317615) has greater than 95% purity as determined by SDS-PAGE under reducing conditions.