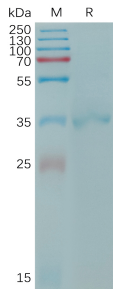


Recombinant Human Claudin 6 Protein (Fc Tag) (A317768)

Specifications:

Name:	Recombinant Human Claudin 6 Protein (Fc Tag)
Applications:	SDS-PAGE
Expression System:	HEK293 cells
Nature:	Recombinant
Protein Species:	Human
Protein Length:	Protein fragment.
Sequence:	hFc(Glu99-Ala330)+CLDN6(Met29-Arg81)
Tag:	N-terminal Human Fc Tag
Molecular Weight:	The protein has a predicted molecular mass of 34.4 kDa after removal of the signal peptide. The apparent molecular mass of hFc-CLDN6(29-81) is approximately 25-35 kDa due to glycosylation.
Conjugate:	Unconjugated
Purity:	> 95%, by SDS-PAGE and Coomassie blue staining.
Product Form:	Lyophilized
Concentration:	Reconstitution dependent.
Formulation:	Lyophilized from sterile Phosphate Buffered Saline, pH 7.4. Normally 5%-8% Trehalose is added as a protectant before lyophilization.
Storage:	Shipped at 4°C. Lyophilized: Store at -20°C to -80°C. Reconstituted: Aliquot and store at -80°C. Product is stable for one year. Avoid freeze/thaw cycles.
Disclaimer:	This product is for research use only. It is not intended for diagnostic or therapeutic use.

Images:



Recombinant Human Claudin 6 Protein (Fc Tag) (A317768) on SDS-PAGE under reducing conditions.