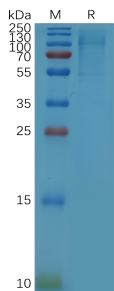


Recombinant Human TIM 1 Protein (6xHis Tag) (A318073)

Specifications:

Name:	Recombinant Human TIM 1 Protein (6xHis Tag)
Applications:	SDS-PAGE
Expression System:	HEK293 cells
Nature:	Recombinant
Protein Species:	Human
Protein Length:	Protein fragment.
Sequence:	TIM1(Ser21-Gly295)+6xHisTag
Tag:	C-terminal 6xHis Tag
Molecular Weight:	The protein has a predicted molecular mass of 30.3 kDa after removal of the signal peptide. The apparent molecular mass of TIM1-His is approximately 100-130 kDa due to glycosylation.
Conjugate:	Unconjugated
Purity:	> 85%, by SDS-PAGE and Coomassie blue staining.
Product Form:	Lyophilized
Concentration:	Reconstitution dependent.
Formulation:	Lyophilized from sterile Phosphate Buffered Saline, pH 7.4. Normally 5%-8% Trehalose is added as a protectant before lyophilization.
Storage:	Shipped at 4°C. Lyophilized: Store at -20°C to -80°C. Reconstituted: Aliquot and store at -80°C. Product is stable for one year. Avoid freeze/thaw cycles.
Disclaimer:	This product is for research use only. It is not intended for diagnostic or therapeutic use.

Images:



Recombinant Human TIM 1 Protein (6xHis Tag) (A318073) on SDS-PAGE under reducing conditions.