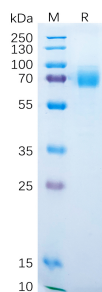


Recombinant Human DKK1 Protein (Fc Tag) (A318289)

Specifications:

| | |
|--------------------|---|
| Name: | Recombinant Human DKK1 Protein (Fc Tag) |
| Applications: | ELISA, SDS-PAGE |
| Expression System: | HEK293 cells |
| Nature: | Recombinant |
| Protein Species: | Human |
| Protein Length: | Protein fragment. |
| Sequence: | DKK1(Thr32-His266)+hFc(Glu99-Ala330) |
| Tag: | C-terminal Human Fc Tag |
| Molecular Weight: | The protein has a predicted molecular mass of 51.9 kDa after removal of the signal peptide. The apparent molecular mass of DKK1-hFc is approximately 70 kDa due to glycosylation. |
| Conjugate: | Unconjugated |
| Purity: | > 90%, by SDS-PAGE and Coomassie blue staining. |
| Product Form: | Lyophilized |
| Concentration: | Reconstitution dependent. |
| Formulation: | Lyophilized from sterile Phosphate Buffered Saline, pH 7.4. Normally 5%-8% Trehalose is added as a protectant before lyophilization. |
| Storage: | Shipped at 4°C. Lyophilized: Store at -20°C to -80°C. Reconstituted: Aliquot and store at -80°C. Product is stable for one year. Avoid freeze/thaw cycles. |
| Disclaimer: | This product is for research use only. It is not intended for diagnostic or therapeutic use. |

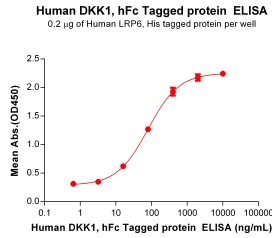
Images:



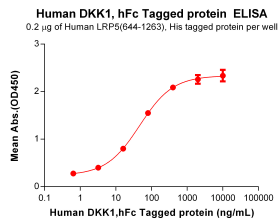
SDS-PAGE of Recombinant Human DKK1 Protein (Fc Tag) (A318289) under reducing conditions.

Recombinant Human DKK1 Protein (Fc Tag) (A318289)

Images continued:



ELISA plates were pre-coated with Recombinant Human LRP6 Protein (6×His Tag) (A317780) at 5 µg/ml (100 µl/well) which can bind Recombinant Human DKK1 Protein (Fc Tag) (A318289) in a linear range of 16-400ng/ml.



ELISA plates were pre-coated with Recombinant Human DKK1 Protein (Fc Tag) (A318289) at 5 µg/ml (100 µl/well) which can bind Recombinant Human DKK1 Protein (Fc Tag) (A318289) in a linear range of 16-400ng/ml.