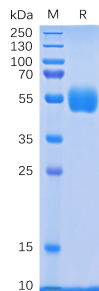


Recombinant Human NKp30 Protein (Fc Tag) (A318335)

Specifications:

Name:	Recombinant Human NKp30 Protein (Fc Tag)
Applications:	ELISA, SDS-PAGE
Expression System:	HEK293 cells
Nature:	Recombinant
Protein Species:	Human
Protein Length:	Protein fragment.
Sequence:	NKp30(Leu19-Glu135)+hFc(Glu99-Ala330)
Tag:	C-terminal Human Fc Tag
Molecular Weight:	The protein has a predicted molecular mass of 39.0 kDa after removal of the signal peptide. The apparent molecular mass of NKp30-hFc is approximately 45-60 kDa due to glycosylation.
Conjugate:	Unconjugated
Purity:	> 95%, by SDS-PAGE and Coomassie blue staining.
Product Form:	Lyophilized
Concentration:	Reconstitution dependent.
Formulation:	Lyophilized from sterile Phosphate Buffered Saline, pH 7.4. Normally 5%-8% Trehalose is added as a protectant before lyophilization.
Storage:	Shipped at 4°C. Lyophilized: Store at -20°C to -80°C. Reconstituted: Aliquot and store at -80°C. Product is stable for one year. Avoid freeze/thaw cycles.
Disclaimer:	This product is for research use only. It is not intended for diagnostic or therapeutic use.

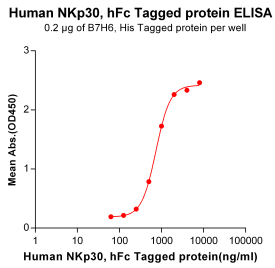
Images:



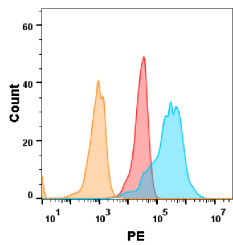
SDS-PAGE of Recombinant Human NKp30 Protein (Fc Tag) (A318335) under reducing conditions.

Recombinant Human NKp30 Protein (Fc Tag) (A318335)

Images continued:



ELISA plates were pre-coated with Recombinant Human B7-H6 Protein (6×His Tag) (A318225) at 2 µg/ml (100 µl/well) which can bind Recombinant Human NKp30 Protein (Fc Tag) (A318335) in a linear range of 250-2000 ng/ml.



B7H6 protein is expressed on the surface of Expi293 cell membrane. Flow cytometry analysis with 2 µg/ml Recombinant Human NKp30 Protein (Fc Tag) (A318335) on Expi293 cells transfected with human B7H6 (Blue histogram) or Expi293 transfected with irrelevant protein (Red histogram), and Isotype antibody on Expi293 transfected with irrelevant protein (Orange histogram).