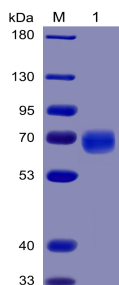


Recombinant Human PD1 Protein (Fc Chimera 6xHis Tag) (A318383)

Specifications:

Name:	Recombinant Human PD1 Protein (Fc Chimera 6xHis Tag)
Applications:	ELISA, SDS-PAGE, Flow Cytometry
Expression System:	HEK293 cells
Nature:	Recombinant
Protein Species:	Human
Protein Length:	Protein fragment.
Sequence:	PD-1(Phe24-Val170)+mFc(Pro99-Lys330)+6xHisTag
Tag:	C-terminal Mouse Fc Tag and 6xHis Tag
Molecular Weight:	The protein has a predicted molecular mass of 43.5 kDa after removal of the signal peptide.
Conjugate:	Unconjugated
Purity:	> 95%, by SDS-PAGE and Coomassie blue staining.
Product Form:	Lyophilized
Concentration:	Reconstitution dependent.
Formulation:	Lyophilized from sterile Phosphate Buffered Saline, pH 7.4. Normally 5%-8% Trehalose is added as a protectant before lyophilization.
Storage:	Shipped at 4°C. Lyophilized: Store at -20°C to -80°C. Reconstituted: Aliquot and store at -80°C. Product is stable for one year. Avoid freeze/thaw cycles.
Disclaimer:	This product is for research use only. It is not intended for diagnostic or therapeutic use.

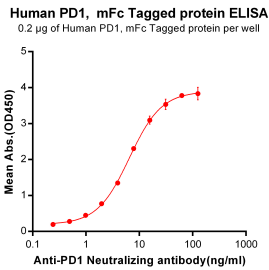
Images:



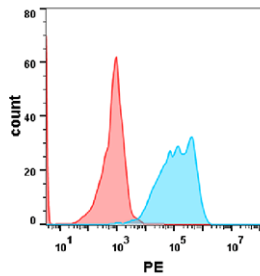
SDS-PAGE of Recombinant Human PD1 Protein (Fc Chimera 6xHis Tag) (A318383) under reducing conditions.

Recombinant Human PD1 Protein (Fc Chimera 6xHis Tag) (A318383)

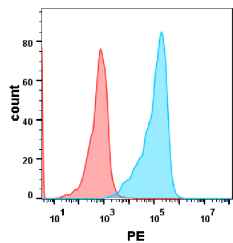
Images continued:



ELISA plates were pre-coated with Recombinant Human PD1 Protein (Fc Chimera 6xHis Tag) (A318383) at 2 µg/ml (100 µl/well) which can bind Pembrolizumab Biosimilar - Anti-PD1 Antibody - BSA and Azide free (A318950) in a linear range of 0.24-6.49 ng/ml.



Flow cytometry analysis of 2µg/ml of Recombinant Human PD1 Protein (Fc Chimera 6xHis Tag) (A318383) on Expi293 cells transfected with human PD-L1 (Blue histogram) or Expi293 transfected with irrelevant protein (Red histogram).



HEK293 cell line was transfected with: irrelevant protein (red histogram) and human PD-L2 protein (blue histogram) were surface stained with 2µg/ml Recombinant Human PD1 Protein (Fc Chimera 6xHis Tag) (A318383) followed by Goat Anti-Mouse IgG (PE) Antibody.