

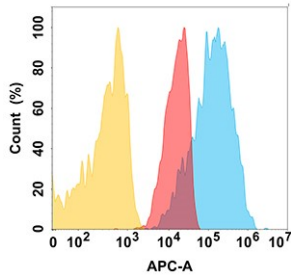
Anti-Nectin 2 Antibody [DMC224] - BSA and Azide free (A318793)

Specifications:

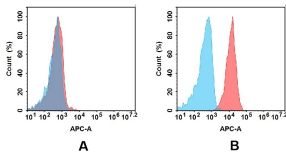
Name:	Anti-Nectin 2 Antibody [DMC224] - BSA and Azide free
Description:	Recombinant chimeric monoclonal [DMC224] antibody to Nectin 2.
Applications:	ELISA, Flow Cytometry
Recommended Dilutions:	ELISA: 1:5,000-10,000, Flow Cytometry: 1:100
Reactivity:	Human
Host:	Rabbit / Human
Clonality:	Monoclonal
Clone ID:	DMC224
Isotype:	IgG1
Conjugate:	Unconjugated
Purification:	Affinity chromatography.
Concentration:	Reconstitution dependent.
Product Form:	Lyophilized
Reconstitution:	Prior to reconstitution, centrifuge the vial at 5,000g for 3-5 minutes at room temperature. Reconstitute with appropriate volume of distilled sterile water to bring product to 1mg/ml concentration. After addition of distilled sterile water, mix by gentle tapping. Note: It is not recommended to vortex or vigorously pipette the sample.
Formulation:	Lyophilized from sterile Phosphate Buffered Saline, pH 7.4. Normally 5%-8% Trehalose is added as a protectant before lyophilization.
Storage:	Shipped at 4°C. Lyophilized: Store at -20°C to -80°C. Reconstituted: Aliquot and store at -80°C. Product is stable for one year. Avoid freeze/thaw cycles.
General Notes:	This antibody is a recombinant rabbit chimeric monoclonal antibody containing human IgG1 Fc.
Disclaimer:	This product is for research use only. It is not intended for diagnostic or therapeutic use.

Anti-Nectin 2 Antibody [DMC224] - BSA and Azide free (A318793)

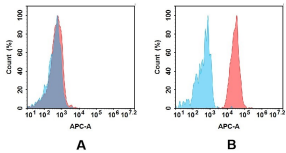
Images:



CD112 protein is expressed on the surface of Expi293 cell membrane. Flow cytometry analysis with Anti-Nectin 2 Antibody [DMC224] - BSA and Azide free (A318793) on Expi293 cells transfected with human CD112 (Blue histogram) or Expi293 transfected with irrelevant protein (Red histogram), and Isotype antibody on Expi293 transfected with irrelevant protein (Orange histogram).



Flow cytometry analysis of antigen binding of Anti-Nectin 2 Antibody [DMC224] - BSA and Azide free (A318793). (A) Anti-Nectin 2 Antibody [DMC224] - BSA and Azide free (A318793) does not bind to MM.1S cells that do not express CD112. (B) A clear peak shift of Anti-Nectin 2 Antibody [DMC224] - BSA and Azide free (A318793) was seen compared to the control when incubated with CD112-expressing MCF-7 cells, indicating strong binding of Anti-Nectin 2 Antibody [DMC224] - BSA and Azide free (A318793) to CD112. Antibodies were incubated at 5 μ g/ml.



Flow cytometry analysis of antigen binding of Anti-Nectin 2 Antibody [DMC224] - BSA and Azide free (A318793). (A) Anti-Nectin 2 Antibody [DMC224] - BSA and Azide free (A318793) does not bind to MM.1S cells that do not express CD112. (B) A clear peak shift of Anti-Nectin 2 Antibody [DMC224] - BSA and Azide free (A318793) was seen compared to the control when incubated with CD112-expressing Huh7 cells, indicating strong binding of Anti-Nectin 2 Antibody [DMC224] - BSA and Azide free (A318793) to CD112. Antibodies were incubated at 5 μ g/ml.