

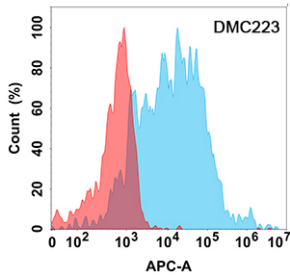
## Anti-TREM2 Antibody [DMC223] - BSA and Azide free (A318794)

### Specifications:

Name:	Anti-TREM2 Antibody [DMC223] - BSA and Azide free
Description:	Recombinant chimeric monoclonal [DMC223] antibody to TREM2.
Applications:	ELISA, Flow Cytometry
Recommended Dilutions:	ELISA: 1:5,000-10,000, Flow Cytometry: 1:100
Reactivity:	Human
Host:	Rabbit / Human
Clonality:	Monoclonal
Clone ID:	DMC223
Isotype:	IgG1
Conjugate:	Unconjugated
Purification:	Affinity chromatography.
Concentration:	Reconstitution dependent.
Product Form:	Lyophilized
Reconstitution:	Prior to reconstitution, centrifuge the vial at 5,000g for 3-5 minutes at room temperature. Reconstitute with appropriate volume of distilled sterile water to bring product to 1mg/ml concentration. After addition of distilled sterile water, mix by gentle tapping. Note: It is not recommended to vortex or vigorously pipette the sample.
Formulation:	Lyophilized from sterile Phosphate Buffered Saline, pH 7.4. Normally 5%-8% Trehalose is added as a protectant before lyophilization.
Storage:	Shipped at 4°C. Lyophilized: Store at -20°C to -80°C. Reconstituted: Aliquot and store at -80°C. Product is stable for one year. Avoid freeze/thaw cycles.
General Notes:	This antibody is a recombinant rabbit chimeric monoclonal antibody containing human IgG1 Fc.
Disclaimer:	This product is for research use only. It is not intended for diagnostic or therapeutic use.

## Anti-TREM2 Antibody [DMC223] - BSA and Azide free (A318794)

Images:



Flow cytometry analysis with Anti-TREM2 Chimeric Antibody [DMC223] - Azide free (A318794) on Expi293 cells transfected with human TREM2 (blue histogram) or Expi293 transfected with irrelevant protein (red histogram).