

Ipilimumab Biosimilar - Anti-CTLA4 Antibody - BSA and Azide free (A318934)

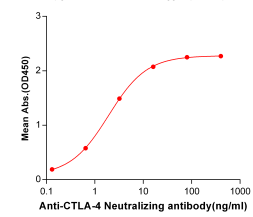
Specifications:

Name:	Ipilimumab Biosimilar - Anti-CTLA4 Antibody - BSA and Azide free
Description:	Recombinant human monoclonal antibody to CTLA4.
Applications:	ELISA, Flow Cytometry
Recommended Dilutions:	ELISA: 1:5,000-10,000, Flow Cytometry: 1:100
Reactivity:	Human
Host:	Human
Clonality:	Monoclonal
Isotype:	IgG1
Conjugate:	Unconjugated
Purification:	Affinity chromatography.
Concentration:	Reconstitution dependent.
Product Form:	Lyophilized
Reconstitution:	Reconstitute with distilled sterile water.
Formulation:	Lyophilized from sterile Phosphate Buffered Saline, pH 7.4. Normally 5%-8% Trehalose is added as a protectant before lyophilization.
Storage:	Shipped at 4°C. Lyophilized: Store at -20°C to -80°C. Reconstituted: Aliquot and store at -80°C. Product is stable for one year. Avoid freeze/thaw cycles.
General Notes:	Prior to reconstitution, centrifuge the vial at 5,000g for 3-5 minutes at room temperature. Reconstitute with appropriate volume of distilled sterile water to bring product to 1mg/ml concentration. After addition of distilled sterile water, mix by gentle tapping. Note: It is not recommended to vortex or vigorously pipette the sample.
Disclaimer:	This product is for research use only. It is not intended for diagnostic or therapeutic use.

Ipilimumab Biosimilar - Anti-CTLA4 Antibody - BSA and Azide free (A318934)

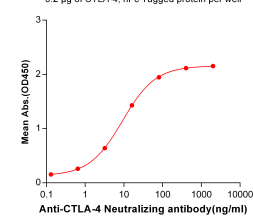
Images:

Anti-CTLA4 (Ipilimumab biosimilar) mAb ELISA

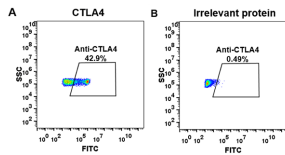


ELISA plates were pre-coated with Recombinant Human CTLA4 Protein (Fc Chimera 6xHis Tag) (A318391) at 2 µg/ml (100 µl/well) which can bind Ipilimumab Biosimilar - Anti-CTLA4 Antibody - BSA and Azide free (A318934) in a linear range of 0.13-16.0 ng/ml.

Anti-CTLA4 (Ipilimumab biosimilar) mAb ELISA



ELISA plates were pre-coated with Recombinant Human CTLA4 Protein (Fc Tag) (A318249) at 2 µg/ml (100 µl/well) which can bind Ipilimumab Biosimilar - Anti-CTLA4 Antibody - BSA and Azide free (A318934) in a linear range of 0.64-80.0 ng/ml. In order to specifically detect Ipilimumab Biosimilar - Anti-CTLA4 Antibody - BSA and Azide free (A318934), Mouse Anti-Human Fab Antibody was used as detection antibody.



HEK293 cell line was transfected with: Irrelevant protein (B) and human CTLA4 (A). Cells were surface stained with 1 µg/ml of Ipilimumab Biosimilar - Anti-CTLA4 Antibody - BSA and Azide free (A318934) followed by Anti-Human IgG Antibody (Alexa 488).