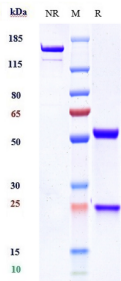


Anti-Claudin 6 Antibody [AE3-20] - Low endotoxin, Azide free (A323972)**Specifications:**

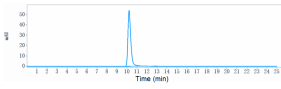
Name:	Anti-Claudin 6 Antibody [AE3-20] - Low endotoxin, Azide free
Description:	Recombinant human monoclonal [AE3-20] antibody to Claudin 6.
Applications:	ELISA, FACS, Functional Assay, In Vivo
Reactivity:	Human
Host:	Human
Clonality:	Monoclonal
Clone ID:	AE3-20
Isotype:	IgG
Light Chains:	kappa
Conjugate:	Unconjugated
Purification:	Protein A affinity chromatography.
Concentration:	Reconstitution dependent.
Molecular Weight:	This antibody has a predicted MW of 150 kDa.
Purity:	> 90% (by SDS-PAGE and SEC-HPLC).
Product Form:	Lyophilized
Reconstitution:	Reconstitute with 100µl of sterile double-distilled water to bring antibody to 1mg/ml concentration. Gently shake to solubilize completely. Do not vortex!
Formulation:	Lyophilized from 25mM Histadine, pH 6.2, with 8% Sucrose and 0.01% Tween80.
Storage:	Shipped at 4°C. Lyophilized: Store at -20°C to -80°C. Reconstituted: Aliquot and store at -80°C. Product is stable for one year. Avoid freeze/thaw cycles.
Disclaimer:	This product is for research use only. It is not intended for diagnostic or therapeutic use.

Anti-Claudin 6 Antibody [AE3-20] - Low endotoxin, Azide free (A323972)

Images:



SDS-PAGE analysis of Anti-Claudin 6 Antibody [AE3-20] - Low endotoxin, Azide free (A323972) under reducing (R) conditions confirms that the purity of this antibody is greater than 90%.



SEC-HPLC analysis of Anti-Claudin 6 Antibody [AE3-20] - Low endotoxin, Azide free (A323972) confirms that the purity of this antibody is greater than 95%.